



Date: November 14, 2011

Project: Immersion HQ Relocate

Location: 30 Rio Robles, San Jose, CA

Project Number: 31135.20

Bulletin No.: 1

Bulletin

To Construction Contract dated: TBD

Attn:

DPR Construction
1510 Winchester Blvd.
San Jose, CA 95128

Prepared By: Ned FEnnie

This Bulletin directs you to proceed as indicated:

- [**X**] In order to expedite the Work and avoid or minimize delays in the Work and which may affect Contract Sum or Contract Time, the Contract Documents are hereby amended as described below. ***Proceed with this work promptly and submit final costs for Work involved and change in Contract Time (if any), for inclusion in a subsequent Change Order.***
- [] The information contained in this Bulletin interprets the Contract Documents or orders minor changes in the Work without change in Contract Sum or Contract Time. ***Execute promptly the instructions given herein; however, if you consider that a change in Contract Sum or Contract Time is required, submit an itemized proposal to the Architect immediately and before proceeding with this Work.*** If your proposal is found to be satisfactory and in proper order, this Bulletin will be superseded by a Change Order.
- [] Changes described herein are being considered for incorporation into the Work. ***Do not proceed on these changes until authorized by the Architect.*** However, Submit an itemized quotation, in format required by the Contract Documents, indicating your proposed changes to the Contract Sum or Contract Time. Further instructions will be issued by the Architect upon receipt and review of your quotation.

DESCRIPTION

Bulletin No. 1 incorporates the following revisions to the scope of work as directed by the San Jose Plan Checker and Owner:

Item 1: Add exterior glazing at two (e) roll-up exterior door locations.

Item 2: Upgrade (E) partitions to 1 hour and doors/frames to 45 min. at Storage #111 and Workshop #112 locations.

FENNIE
+
MEHL
ARCHITECTS

300 BRANNAN STREET
SUITE 310
SAN FRANCISCO CA
94107
FAX 415.278.9586
TEL 415.278.9596

Item 3: Adjust (N) stair rail location at main entry stair.

Item 4: Demolish (E) water heater closet at Men's Toilet Room, replace (E) water heater in Mech. Room and renovate piping to serve devices previously served by water heater in closet at Men's Toilet Room.

Item 4: Miscellaneous clarifications/corrections.

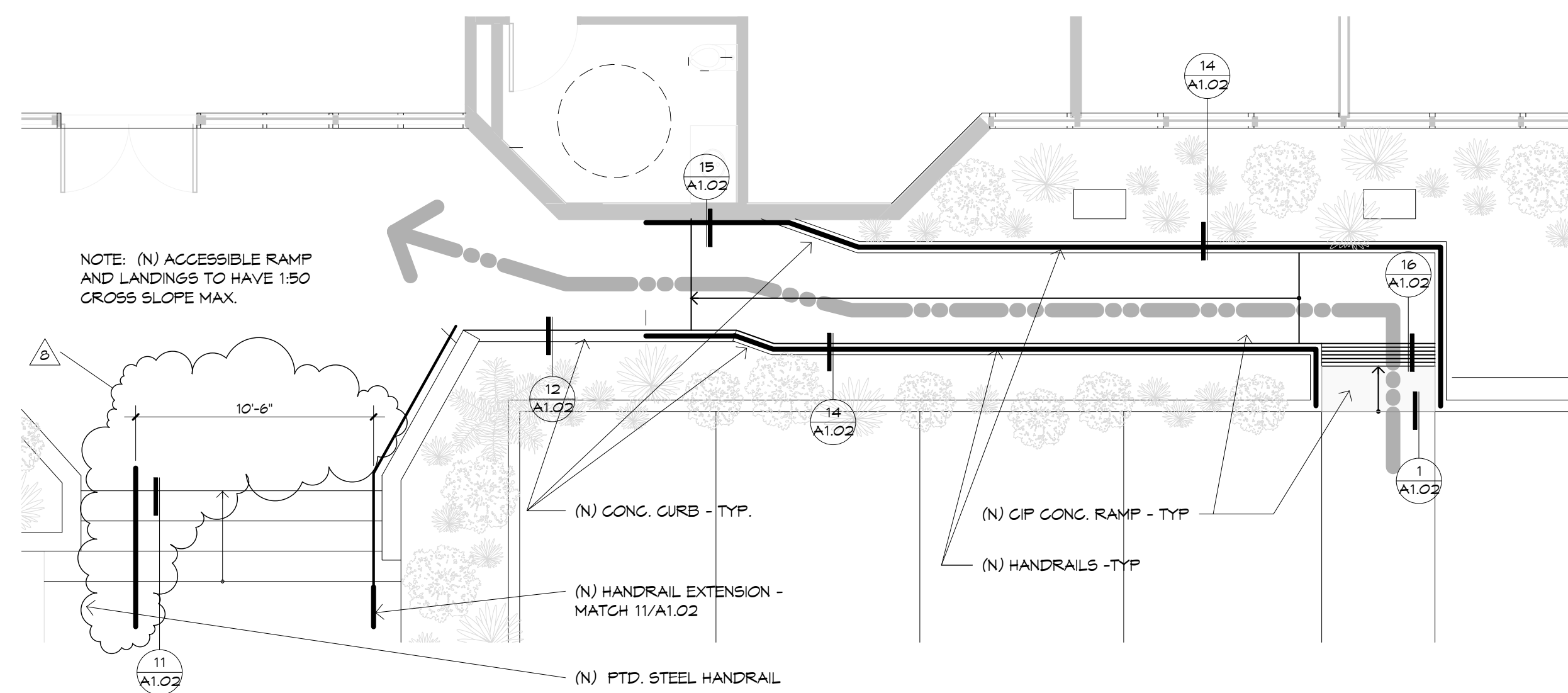
DRAWINGS ISSUED

A1.01	Site Plan and Details
A2.04	Demolition Plan Ground Level
A2.14	Construction Plan Ground Level
A2.34	Reflected Ceiling Plan Ground Level
A3.10	Enlarged Plans/Views
A7.10	Elevations
A8.20	Ceiling Details
A9.10	Door Types, Hardware schedule, + Door Details
A9.11	Door & Glazing Details

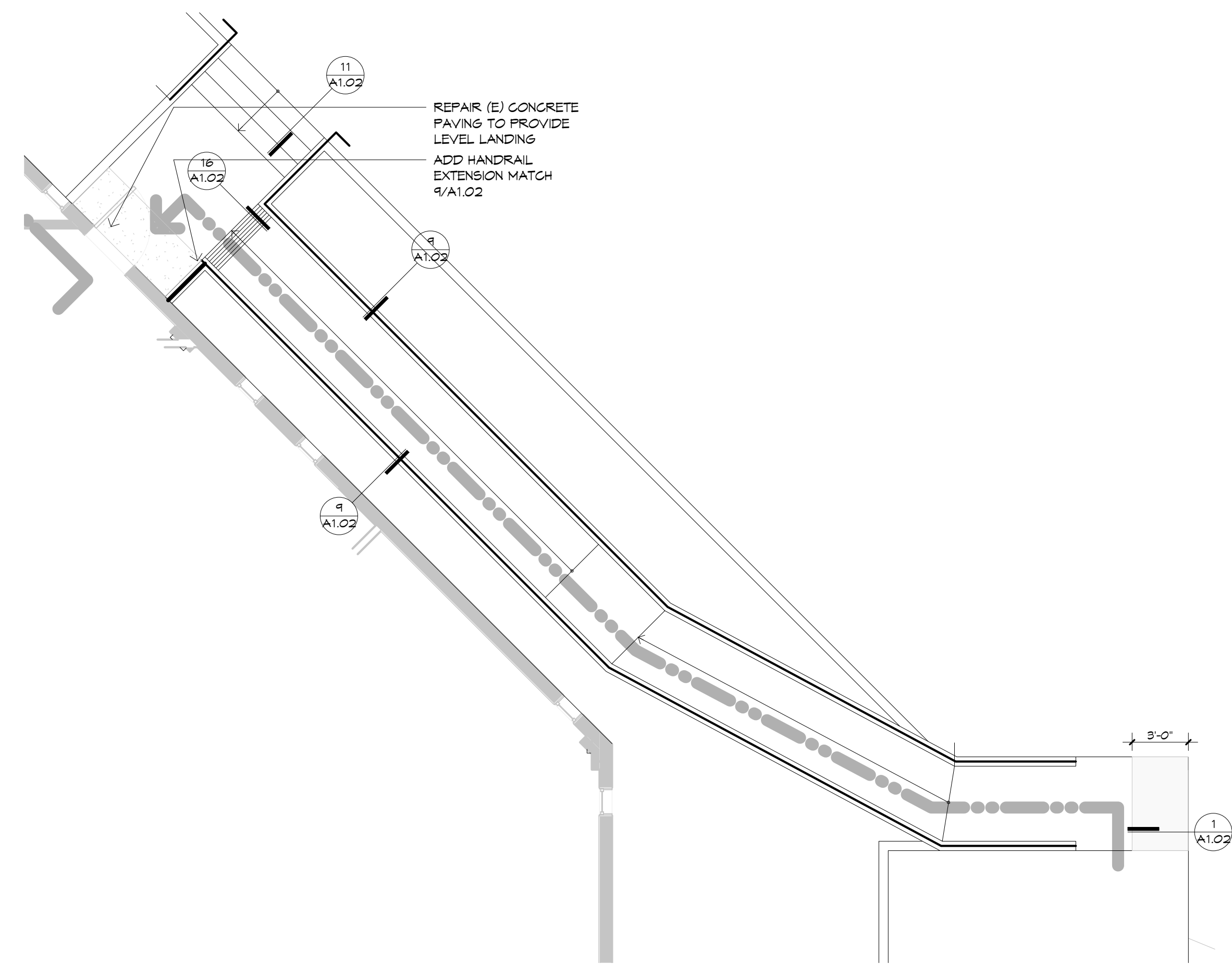
++ END OF BULLETIN ++

Issued by: Ned Fennie

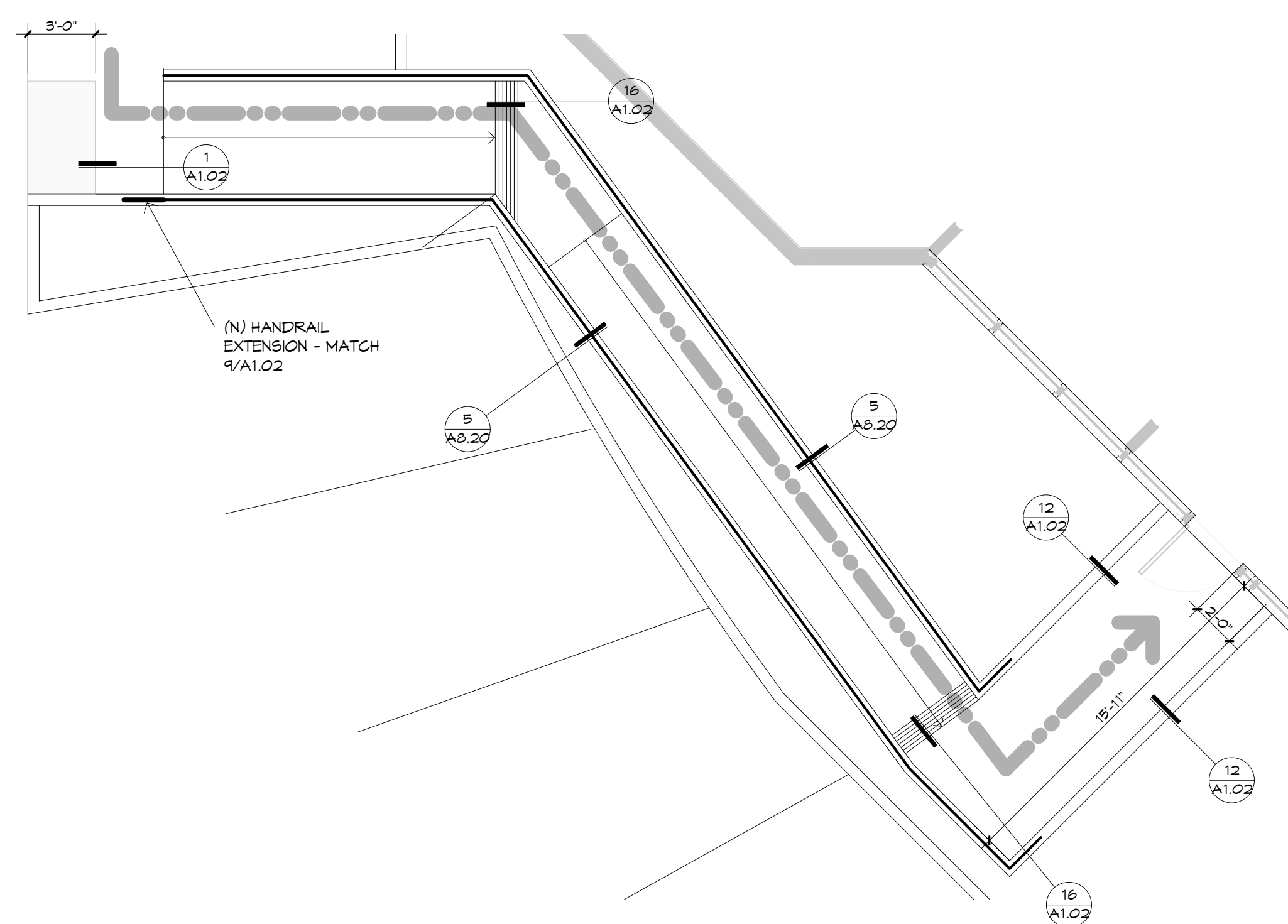
Issue	Description	Date
5	Progress	11/2/11
6	Permit Application	11/9/11
8	Bulletin 1	11/16/11



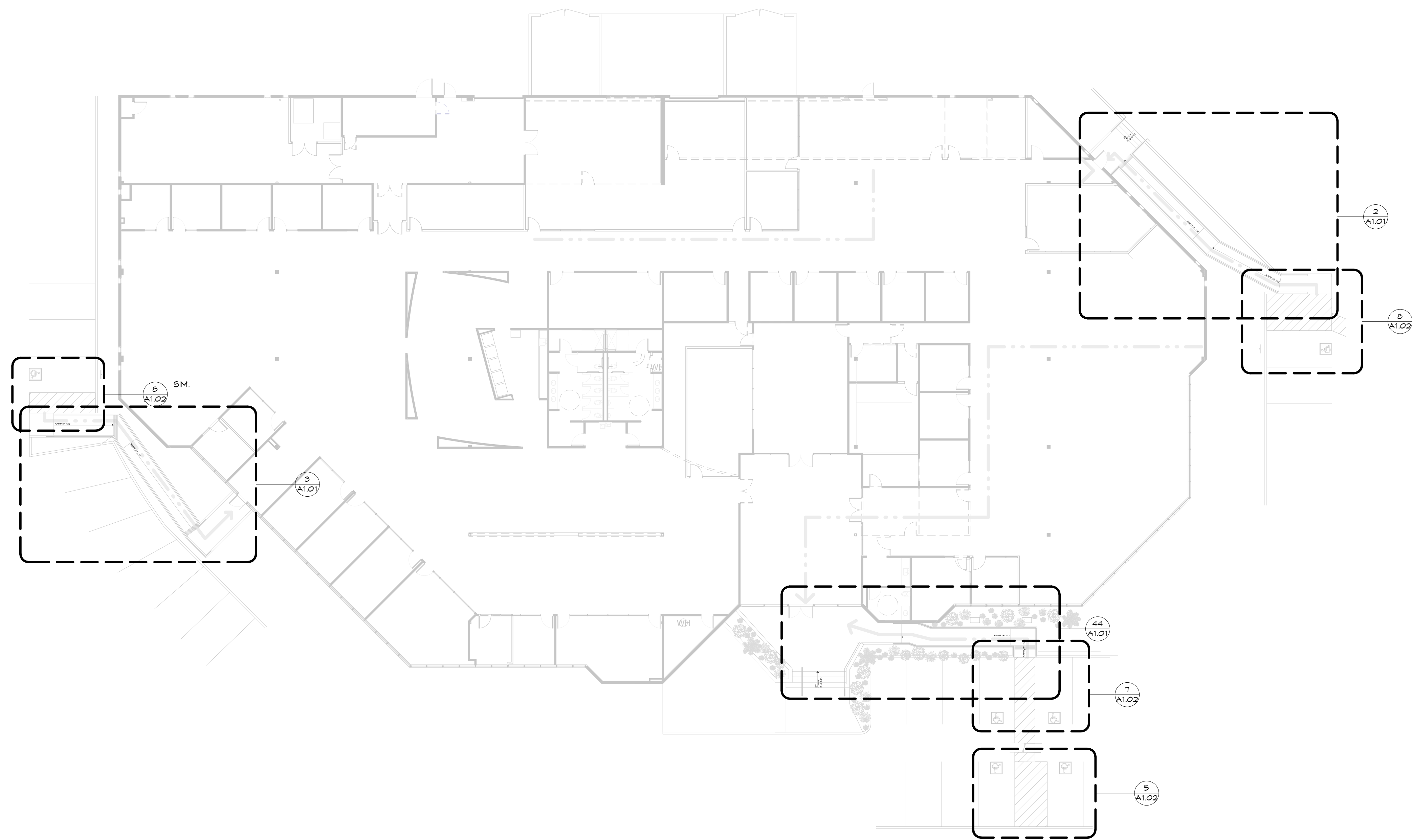
44 Existing Stairs and New Accessible Ramp - Main Building Entry
3/16" = 1'-0"



2 Existing Accessible Ramp - West Entry
3/16" = 1'-0"

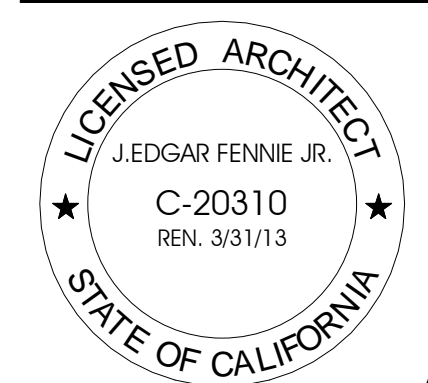


3 Existing Accessible Ramp - East Entry
3/16" = 1'-0"



1 Site Plan
1/16" = 1'-0"

Project Number:	91195.00
Drawn By:	JEF
Checked By:	Checker
Date:	10/4/11
Owner Approval:	Janice Passarelio
Date:	



As indicated

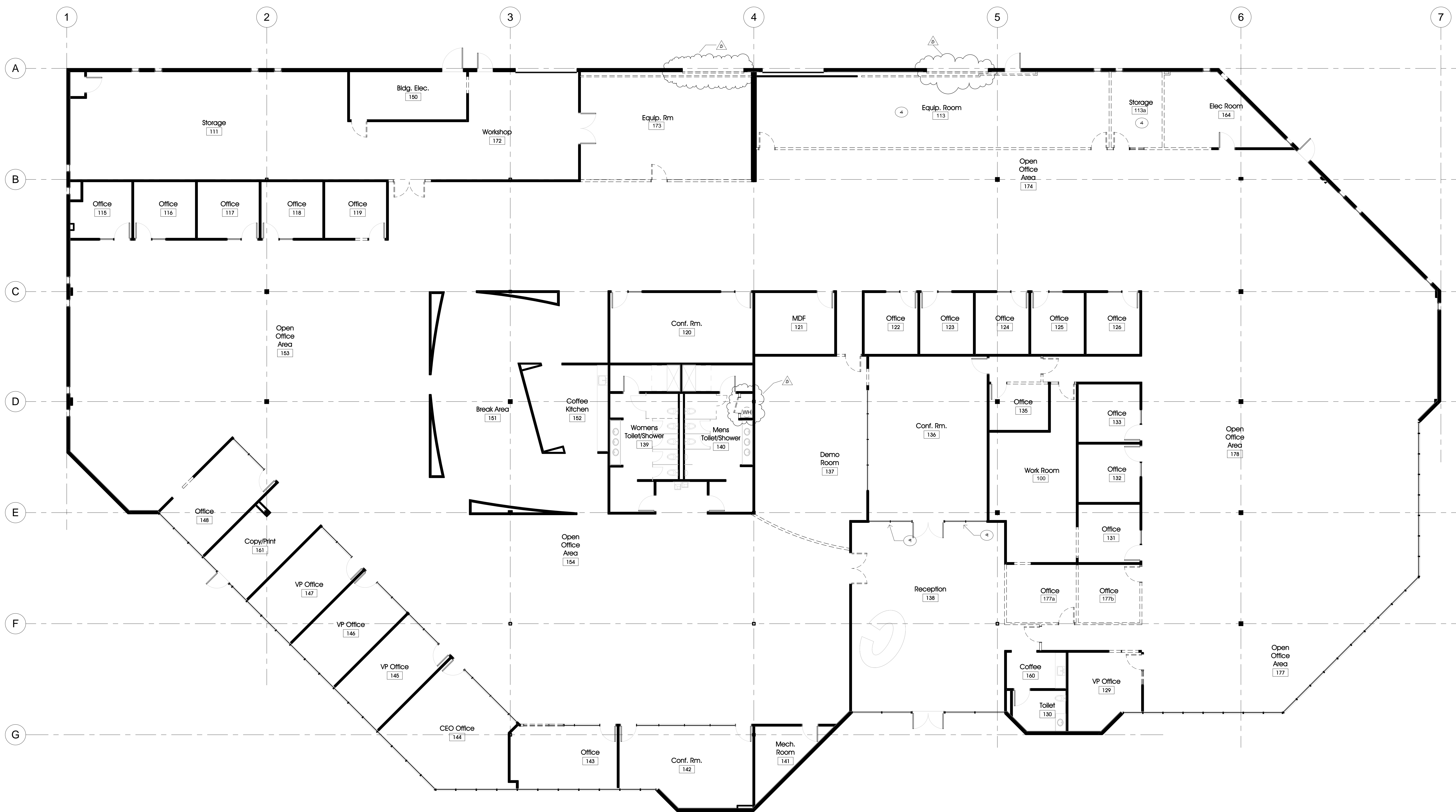
SITE PLAN + DETAILS



Corporate HQ
Relocation

30 Rio Robles Drive, San Jose, CA

Issue	Description	Date
5	Progress	11/2/11
6	Permit Application	11/9/11
8	Bulletin 1	11/16/11



DEMOLITION PLAN NOTES

- CONDUCT A PRE-DEMOLITION JOBSITE MEETING PRIOR TO DEMOLITION TO SCHEDULE THE WORK WITH THE ARCHITECT, TENANT, BUILDING OWNER.
- EXERCISE CAUTION IN REMOVING MATERIALS ON OR NEAR THE EXISTING SUSPENDED CEILING SYSTEM GRID. DO NOT DAMAGE GRID. PATCH THE DAMAGED GRID AS REQUIRED TO RESTORE THE DAMAGED GRID TO ITS ORIGINAL EXISTING CONDITION. WHERE DAMAGED, REPLACE ENTIRE GRID SECTION TO THE ADJOINING SECTION OF GRID, MAKING THE REPAIR INVISIBLE.
- MAINTAIN BUILDING SECURITY, FIRE ALARM, AND FIRE PROTECTION SYSTEMS AT ALL TIMES.
- REMOVE EXISTING FINISHES (INCLUDING WALL COVERINGS, BASE, AND FLOOR FINISHES) FROM THE PROJECT AREA, UNLESS OTHERWISE NOTED.
- EXISTING BUILDING CORE AREAS ARE N.I.C., U.O.N. REMOVE PIPING AND CAP UTILITIES WHERE FIXTURES (SINKS, ELECTRICAL OUTLETS, SWITCHES, ETC.) OR PARTITIONS HAVE BEEN REMOVED.
- CAP UTILITIES BEHIND NEW FINISH SURFACES.
- DO NOT REMOVE UTILITY LINES SERVING OTHER PARTS OF THE BUILDING UNTIL NEW REPLACEMENT LINES ARE INSTALLED.
- REMOVE AND REFURNISH TO NEW CONDITION THE FOLLOWING SIGHT EXPOSED ITEMS INTENDED FOR REUSE IN THE PROJECT:
 - A. ACOUSTICAL CEILING TILES AND APPURTENANCES.
 - B. ELEC. FIXTURES - CLEAN AND RELAMP ALL FIXTURES NOTED TO REMAIN.
 - C. DOORS (W/BLDS), STD. FINISH, & DOOR HARDWARE.
 - D. HVAC DIFFUSERS - CLEAN & REUSE BUILDING STANDARD TYPES ONLY.
 - E. FIRE EXTINGUISHERS & CABINETS.
 - F. WINDOW COVERINGS.
- RECYCLE ALL BUILDING MATERIALS REMOVED FROM PROJECT AREA PER OWNER'S GREEN BUILDING STANDARDS, WHERE APPLICABLE. MAINTAIN LOGS/MANIFESTS OF ALL RECYCLED MATERIALS, AND DELIVER SAME TO OWNER.

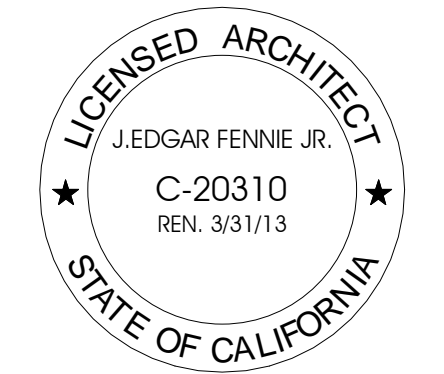
KEYNOTES

- (KEY NOTES FOR THIS SHEET ONLY)
- REMOVE (E) CEILING AND ASSOCIATED CEILING-MTD. EQUIPMENT THIS ROOM/AREA
 - REMOVE (E) DISPLAY SUPPORTS AT THIS GLAZING & PATCH ANY HOLES, FINISH TO MATCH ADJACENT FINISH- TYP.

LEGEND

SYMBOL	DESCRIPTION
	EXISTING CONSTRUCTION TO REMAIN
	EXISTING CONSTRUCTION TO BE REMOVED OR RELOCATED

Project Number:	91195.00
Drawn By:	JEF
Checked By:	Checker
Date:	10/4/11
Owner Approval:	Janice Passarelio
Date:	



DEMOLITION PLAN - GROUND LEVEL

Issue	Description	Date
5	Progress	11/2/11
6	Permit Application	11/9/11
8	Bulletin 1	11/16/11



CONSTRUCTION PLAN NOTES

- ERECT TYPE A2 PARTITIONS, UNLESS OTHERWISE NOTED. REFER TO DETAILS ON SHEET NO. A8.10 FOR TYPICAL BRACINGS AT NEW PARTITIONS.
- WHERE NEW PARTITIONS MEET EXISTING EXTERIOR MULLIONS, INSTALL THE NEW PARTITION PERPENDICULAR TO THE EXISTING EXTERIOR MULLIONS, AND ALIGN THE CENTERLINE OF THE NEW PARTITIONS AND THE MULLIONS.
- INSTALL THE PARTITIONS PARALLEL WITH THE STRUCTURAL GRID OF THE EXISTING BUILDING, UNLESS OTHERWISE SHOWN.
- WHERE A NEW GYPSUM BOARD PARTITION MEETS FLUSH WITH THE FACE OF AN EXISTING GYPSUM BOARD COLUMN OR PARTITION, REMOVE THE EXISTING METAL CORNER BEAD BEFORE INSTALLING THE NEW PARTITION.
- ALIGN THE NEW PARTITION SURFACES WITH THE EXISTING ADJACENT OR ADJOINING SURFACES WHERE INDICATED. FINISH JOINTS TO SMOOTH WITHOUT ANY VISIBLE JOINTS. PATCH AND REPAIR SURFACES TO MATCH ADJACENT OR ADJOINING SURFACES.
- PROVIDE BACKING AND BRACINGS IN PARTITIONS FOR WALL-MOUNTED CASEWORK AND EQUIPMENT.
- PROVIDE A HORIZONTAL DIMENSION OF 1'-6" (MIN.) FROM THE STRIKE FACE OF THE DOOR JAMB TO THE NEAREST RETURNING PARTITION OR MULLION AT THE FULL SIDE OF THE DOOR.
- PROVIDE LEVEL 4 FINISH ALL PARTITIONS, U.O.N.
PROVIDE LEVEL 5 FINISH ALL PARTITIONS TO RECEIVE SEMI-GLOSS, GLOSS OR METALLIC PAINT (SEE FINISH PLAN).
- INSTALL TEMPERED GLASS WITH MANUFACTURER'S SEAL LOCATED AT THE LOWER CORNER OF THE GLAZED PANEL. CONCEAL TONG MARKS, IF ANY.
- CUT AND FIT COMPONENTS AS REQUIRED TO ALTER EXISTING WORK FOR INSTALLATION OF NEW WORK. PATCH DAMAGED AREAS TO MATCH ADJACENT MATERIALS AND FINISHES.
- REMOVE AND CLEAN EXISTING WINDOW COVERINGS AND ANY OTHER RE-USED ITEMS PRIOR TO RE-INSTALLATION.
- PROVIDE 1/2" THK. PLYWOOD UNDERLAYMENT AT THE BOTTOM OF BANKS OF TWO FILES OR MORE. LEVEL FILE UNDERLAYMENT PRIOR TO FILE INSTALLATION. INCREASE DIMENSION OF FILE OPENING HEIGHT IF REQUIRED DUE TO LEVELING PROCESS. FINISH INSTALLATION TO INSURE THAT PLYWOOD UNDERLAYMENT IS NOT VISIBLE.

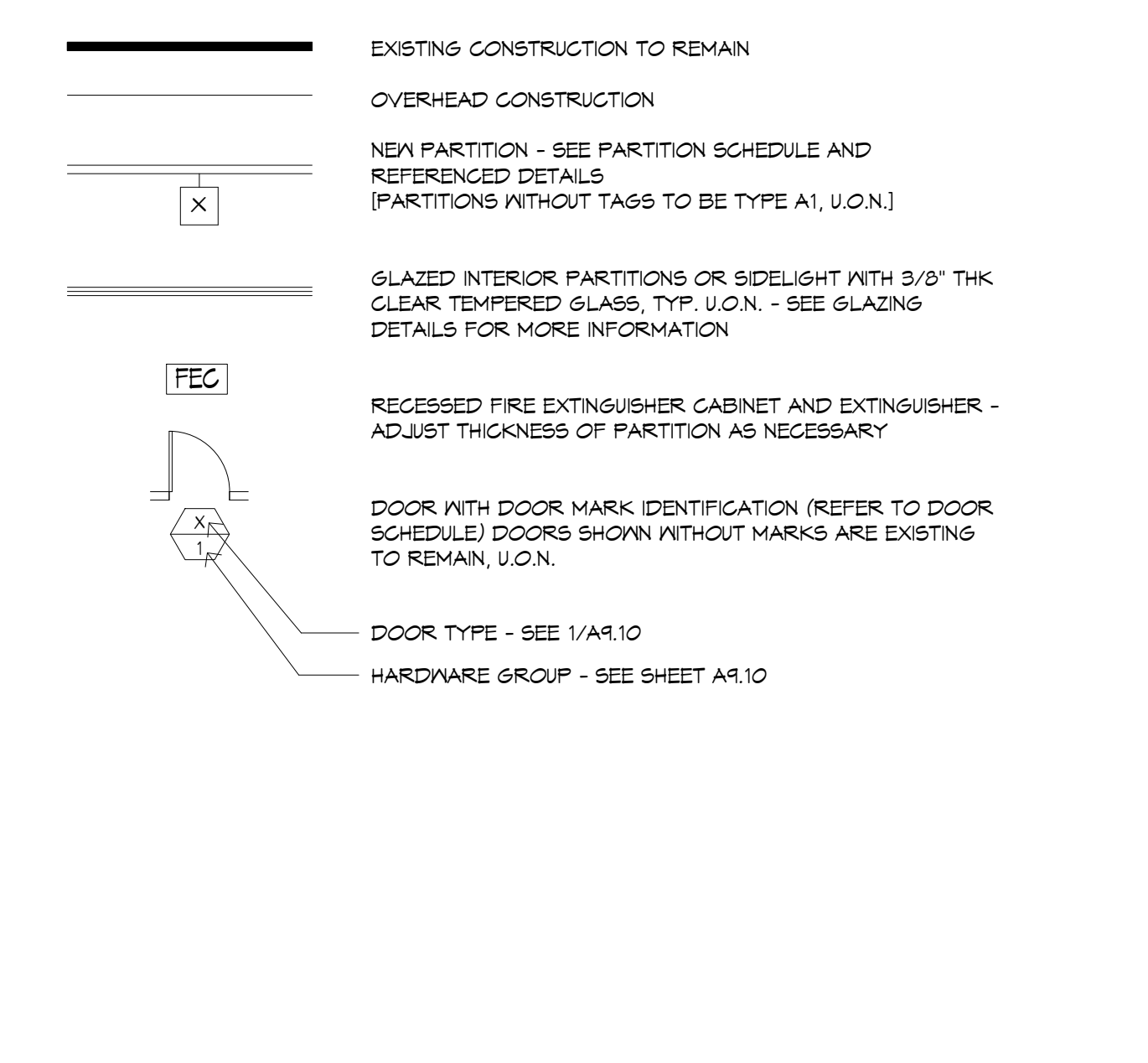
- BRACE HEAD OF ANY NEW PARTITION, WHICH ARE NOT DIRECTLY ATTACHED TO STRUCTURALLY BRACED SUSPENDED CEILING SYSTEM, AS DETAIL.
- CLEAN INTERIOR FACE OF ALL EXTERIOR GLAZINGS, AND ANY OTHER BUILDING STANDARD EXTERIOR WALL COMPONENTS INSTALLED ON INTERIOR FACE, PRIOR TO CLOSE-OUT.
- ATTACH 6YR. BD. TO STEEL STUDS WITH TYPE S DRYWALL SCREWS 8" O.C. AT VERTICAL JOINTS AND 12" O.C. AT FLOOR, CEILING RUNNERS AND INTERMEDIATE STUDS, TYPICALLY.
- STAGGER JOINTS IN 6YR. BD. SHEETS 24" ON EACH SIDE AND ON OPPOSITE SIDES AT ALL ACOUSTICAL PARTITIONS.
- REFER TO THE DOOR SCHEDULE FOR DOOR AND FRAME TYPES, NUMBERS, AND HARDWARE GROUPS.
- INSTALL THE DOOR HARDWARE AT TO COMPLY WITH C.B.C. (TITLE 24) ADJUSTMENTS TO COMPLY WITH OPENING FORCES PER TITLE 24.
- INSTALL DOORS COMPLETE WITH HARDWARE FITTINGS AND ACCESSORIES AS REQUIRED FOR THE OPERATION OF THE SPECIFIC OPENINGS.
- INSTALL EXIT DOORS TO BE OPERABLE FROM THE INSIDE WITHOUT THE USE OF KEYS OR SPECIAL KNOWLEDGE OR PARTICULAR EFFORT.
- COORDINATE LOCKING, LATCHING, KEYING AND CARD READER REQUIREMENTS FOR THE BUILDING USE AND SECURITY WITH THE TENANT PRIOR TO ORDER AND INSTALLATION OF HARDWARE.
- FIELD MEASURE OPENINGS FOR FLOOR TO CEILING DOORS TO ASSURE PROPER FIT.
- TOUCH-UP AND REPAIR IMPERFECTIONS IN NEW AND EXISTING DOORS AND FRAMES SO THEY APPEAR NEW.
- RE-USE EXISTING DOORS & HARDWARE WHEREVER POSSIBLE. PROVIDE NEW HARDWARE TO MATCH EXISTING BUILDING STANDARD FINISH WHERE REQ'D.
- PROVIDE 1/8" CLEARANCE BETWEEN THE BOTTOM OF THE DOOR AND THE FINISH FLOOR MATERIAL.

- SHOP FABRICATE FIRE-RATED DOORS TO SUIT FIELD CONDITIONS, ALLOWING FOR THE FINISH FLOOR MATERIAL. DO NOT TRIM FIRE-RATED DOORS IN THE FIELD.
- INSTALL TACTILE EXIT SIGNS WHERE ALL EXIT SIGNS OCCUR (SEE 9/A8.40).

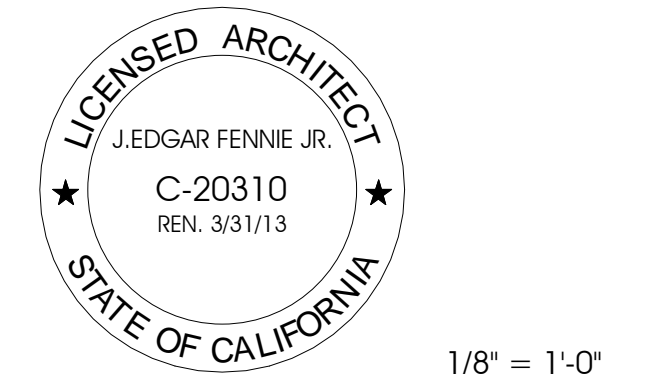
KEYNOTES

- (KEY NOTES FOR THIS SHEET ONLY)
- REMOVE (E) CARPET THIS ROOM/AREA, SALVAGE FOR REINSTALLATION AS DIRECTED. SEE FINISH PLAN.
 - (N) BLDG STD. SIDELIGHT
 - NEW TACTILE ENTRANCE SIGN
 - UPGRADE (E) PARTITION TO MATCH PARTITION TYPE B-2
 - VIF (E) DOORS/FRAMES ARE RATED 45 MIN., UPGRADE TO 45 IN DOORS/FRAMES IF NECESSARY.
 - PROVIDE (N) DOUBLE-PANED LOW E GLAZING IN ALUMINUM FRAMES TO MATCH (E) BASE BUILDING EXTERIOR GLAZING FRAME SYSTEM, PROVIDE BLDG STD. WINDOW BLINDS AT INTERIOR.
 - (N) WATER HEATER TO REPLACE (E) SIZE TO ACCOMMODATE (E) CAPACITY PLUS REQUIRED CAPACITY FROM DEMOLISHED WATER HEATER FROM MEN'S TOILET ROOM CLOSET.

LEGEND

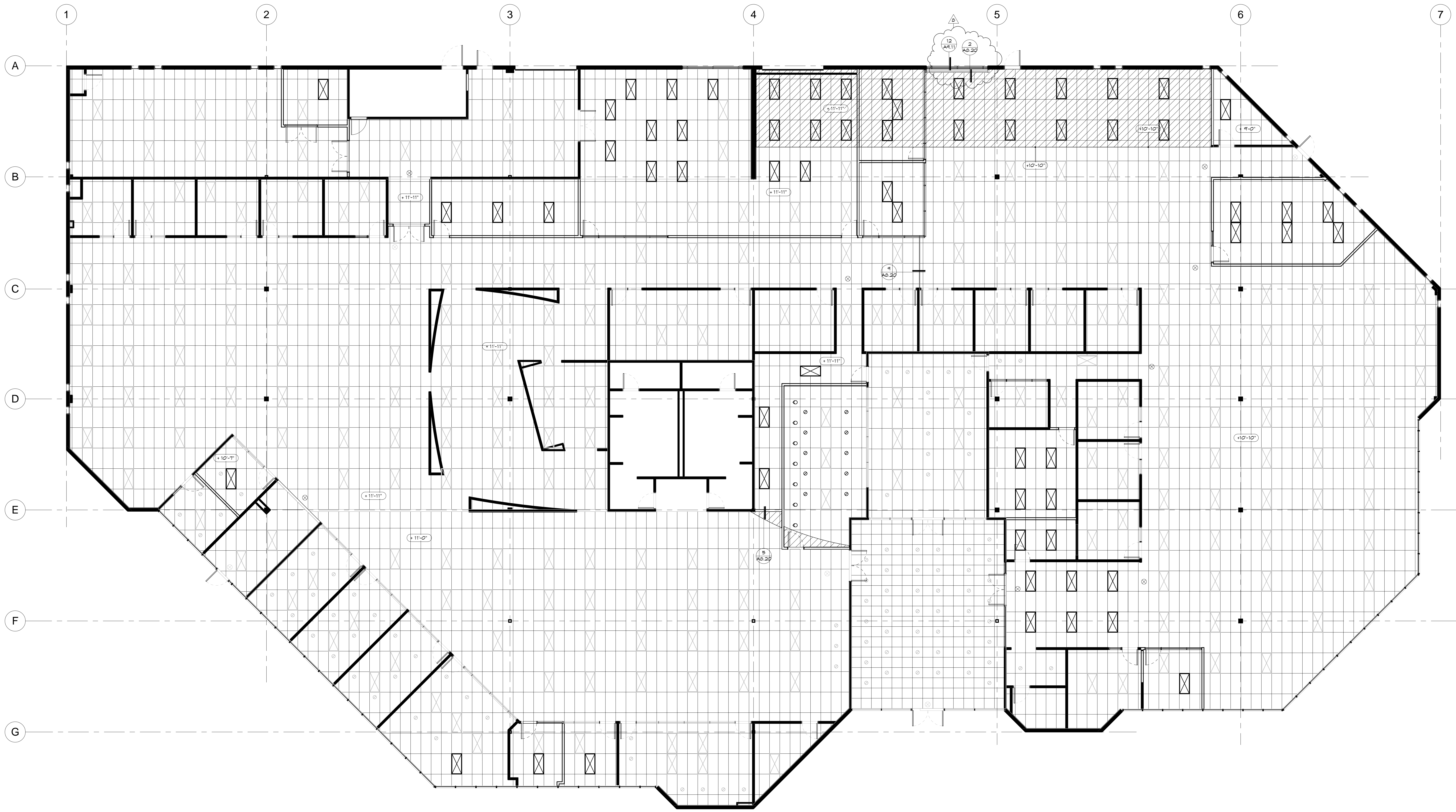


Project Number:	91195.00
Drawn By:	JEF
Checked By:	Checker
Date:	10/4/11
Owner Approval:	Janice Passarelio
Date:	



CONSTRUCTION PLAN - GROUND LEVEL

Issue	Description	Date
5	Progress	11/2/11
6	Permit Application	11/9/11
8	Bulletin 1	11/16/11



REFLECTED CEILING PLAN NOTES

- REVIEW LOCATIONS OF ALL WALL-MOUNTED SWITCHES, STROBE DEVICES OR THERMOSTATS ETC. WITH ARCHITECT PRIOR TO INSTALLATION. DO NOT PROCEED WITH INSTALLATION UNTIL WRITTEN AUTHORIZATION IS GIVEN BY THE ARCHITECT.
- THE MODIFICATIONS TO THE MECHANICAL, ELECTRICAL, PLUMBING, AND FIRE PROTECTION SYSTEMS ARE DESIGN-BUILD.
REFER TO THE ARCHITECTURAL REFLECTED CEILING PLAN(S) FOR:
A. THE GENERAL TYPE AND SPECIFIC LOCATION OF LIGHT FIXTURES
B. THE LOCATION OF WALL MOUNTED EMERGENCY STROBES
C. THE LOCATION OF EXIT SIGNS
D. THE LOCATION OF CEILING-MTD. A-V ITEMS, SUCH AS RECESSED PROJECTION SCREENS AND PROJECTORS
E. THE LOCATION OF WALL-MTD. LIGHTING FIXTURES 60" AFF OR ABOVE
F. THE LOCATION OF ABOVE CEILING SMOKE CURTAINS.
- REFER TO THE DESIGN BUILD ELECTRICAL DRAWINGS FOR:
A. CIRCUITING AND WIRING OF LIGHT FIXTURES, AND SWITCHES.
B. LIFE SAFETY EQUIPMENT.
C. LOCATION OF REQUIRED EMERGENCY LIGHT FIXTURES.
D. TITLE 24 ENERGY COMPLIANCE FORMS FOR POWER AND LIGHTING.
E. THE GENERAL LOCATION OF SWITCHES.
- REFER TO THE DESIGN BUILD MECHANICAL DRAWINGS FOR:
A. DUCTS, AIR MOVEMENT REQUIREMENTS, AND SIZES OF GRILLES AND REGISTERS.
B. TITLE 24 ENERGY COMPLIANCE FORMS FOR HVAC EQUIPMENT.
- REFER TO THE FIRE PROTECTION DRAWINGS FOR:
A. LAYOUT, LOCATION, AND SIZE OF SPRINKLER LINES AND HEADS.
B. PRESSURE REQUIREMENTS
C. SPRINKLER HEAD SPECIFICATIONS
D. LOCATION OF FIRE PROTECTION RISERS AND WALL HYDRANTS.
- PREPARE AND SUBMIT THE FOLLOWING DRAWINGS TO THE ARCHITECT FOR REVIEW AND COORDINATION PRIOR TO ORDER OR FABRICATION OF MATERIALS AND/OR INSTALLATION OF SYSTEM:
A. HVAC DRAWINGS
B. ELECTRICAL CIRCUITING AND SWITCHING PLANS
C. SPRINKLER DIAGRAMS AND HEAD LOCATIONS.

KEY NOTES

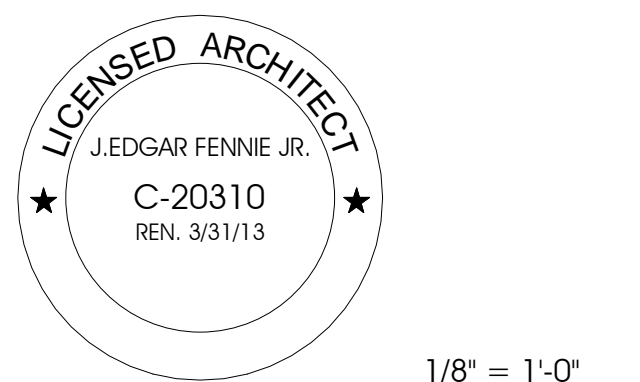
- PAIN ALL NEW CEILING MOUNTED EQUIPMENT, DUCTS ETC. TO MATCH CEILING FINISH, U.O.N.
- REFER TO DETAIL SHEET A8.20 FOR SEISMIC BRACING OF NEW SUSPENDED CEILING AND RECESSED FLUORESCENT LIGHT FIXTURES.
- REFER TO DETAIL 9/A4.10 FOR DEVICE PLATE MOUNTING HEIGHTS
- INSTALL THE SUSPENDED CEILING GRID TO BE LEVEL WITHIN A TOLERANCE OF 1/8" IN 12'-0" ANCHOR AS REQUIRED.
- INSTALL PERIMETER CEILING ANGLE TIGHT TO PARTITION, FREE FROM CURVES, BREAKS, AND OTHER IRREGULARITIES.
- WHERE ACOUSTICAL TILES ARE REQUIRED TO BE CUT, CUT THE TILES TO MAINTAIN A SHARP AND NEAT EDGE.
- PROVIDE EXIT SIGNS AND EMERGENCY LIGHT FIXTURES AS DIRECTED BY THE FIRE MARSHAL AND AS SHOWN ON DRAWINGS.
- INSTALL NEW SPRINKLER HEADS AND LIGHT FIXTURES AT THE CENTER OF THE ACOUSTICAL CEILING TILE, UNLESS OTHERWISE NOTED.
- PROVIDE ACOUSTICALLY LINED TRANSFER DUCTS AT SLAB TO SLAB ACOUSTICAL PARTITIONS.
- ALL FLUORESCENT LAMPS TO BE 3500K 'DAYLIGHT' (UNLESS BUILDING STANDARD REQUIREMENTS ARE OTHERWISE MANDATED) - REPLACE ALL (E) LAMPS IN (E) FIXTURES WHERE INDICATED TO REMAIN.
- REVIEW PLANS AND V.I.F. (E) LIGHT FIXTURES TO BE REMOVED AND OR DEMOLISHED WITH ARCHITECT PRIOR TO DEMOLITION.

LEGEND

NOTE: FIXTURES SHOWN IN GRAY ARE EXISTING TO REMAIN.

SYMBOL	DESCRIPTION
	SUSPENDED GYP. BD. CEILING
	BLDG. STD. 2X2 LAY-IN ACOUSTICAL TILE SUSPENDED CEILING
	BLDG. STD. 2X4 LAY-IN ACOUSTICAL TILE SUSPENDED CEILING
	NEW BUILDING STD. CEILING
	BLDG. STD. 2X2 RECESSED FLUORESCENT LIGHT FIXTURE
	BLDG. STD. 2X4 RECESSED FLUORESCENT LIGHT FIXTURE
	BLDG. STD. RECESSED COMPACT FLUORESCENT DOWNLIGHT
	BLDG. STD. RECESSED COMPACT FLUORESCENT WALLWASHER
	BLDG. STD. CEILING MTD. EXIT SIGN

Project Number:	91195.00
Drawn By:	JEF
Checked By:	
Date:	10/4/11
Owner Approval:	Janice Passarelio
Date:	



REFLECTED CEILING PLAN - GROUND LEVEL

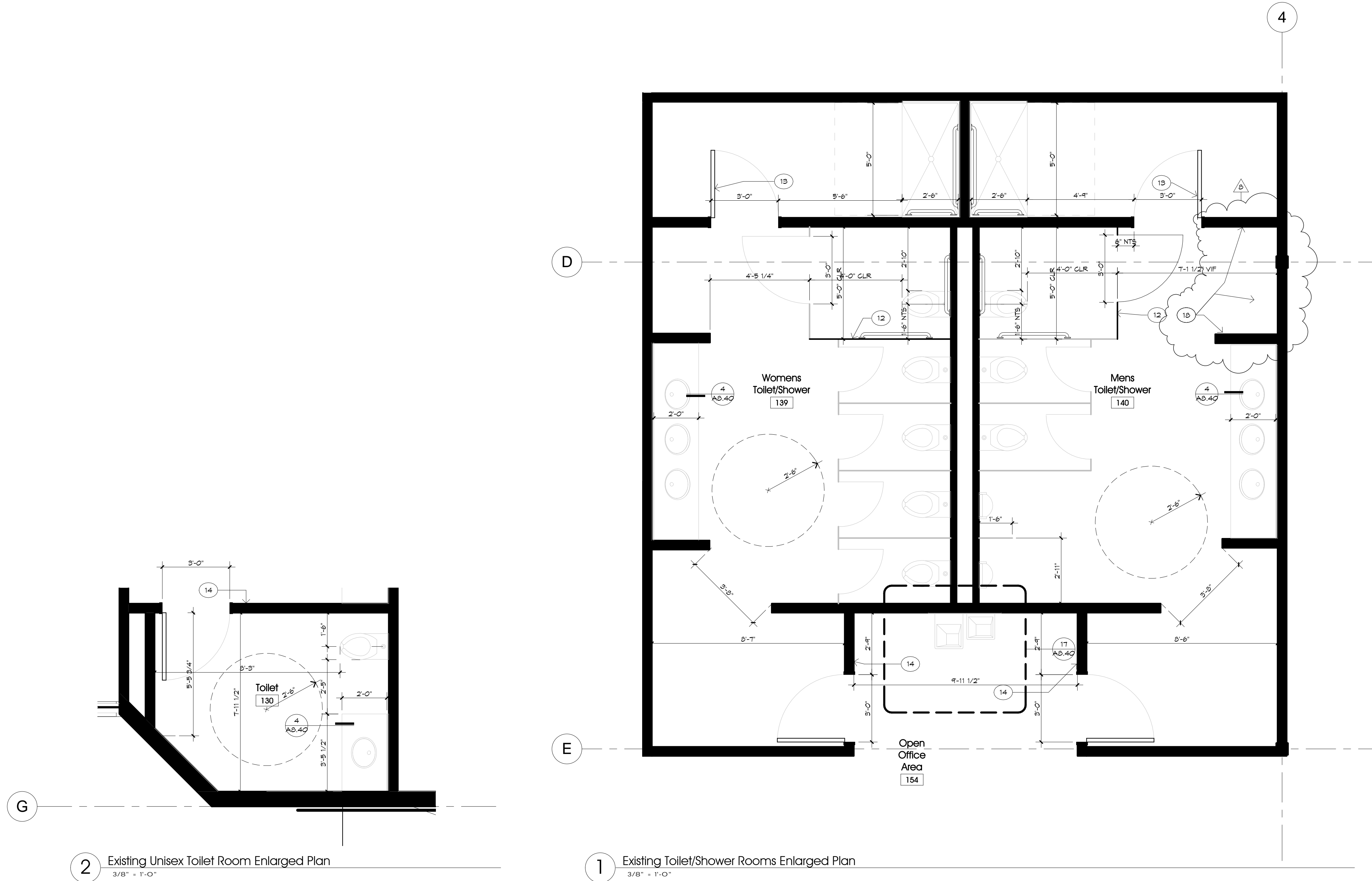


Corporate HQ
Relocation

30 Rio Robles Drive, San Jose, CA

Issue	Description	Date
5	Progress	11/2/11
6	Permit Application	11/9/11
8	Bulletin 1	11/16/11

Project Number:	91195.00
Drawn By:	JEF
Checked By:	
Date:	10/4/11
Owner Approval:	Janice Passarelio
Date:	



2 Existing Unisex Toilet Room Enlarged Plan
3/8" = 1'-0"

1 Existing Toilet/Shower Rooms Enlarged Plan
3/8" = 1'-0"

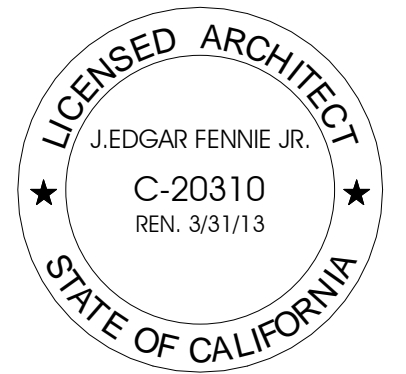
ENLARGED PLANS NOTES

- SEE 1/A3.40 FOR TYPICAL TOILET ROOM ACCESSORIES AND MOUNTING HEIGHTS
- ALL (E) FINISHES THESE ROOMS TO REMAIN AS IS, U.O.N.
-

KEY NOTES

(KEY NOTES FOR THIS SHEET ONLY)

- 12 RELOCATE/MODIFY (E) TOILET PARTITION TO PROVIDE REQUIRED CLEARANCES AS INDICATED
- 13 NO CLOSER THIS DOOR
- 14 SEE SHEET A3.40 FOR TOILET ROOM SIGNAGE AT TOILET ENTRANCE TYP.
- 15 PATCH WALL SCARS AND MATCH (E) ADJACENT FLOOR, BASE AND WALL FINISHES



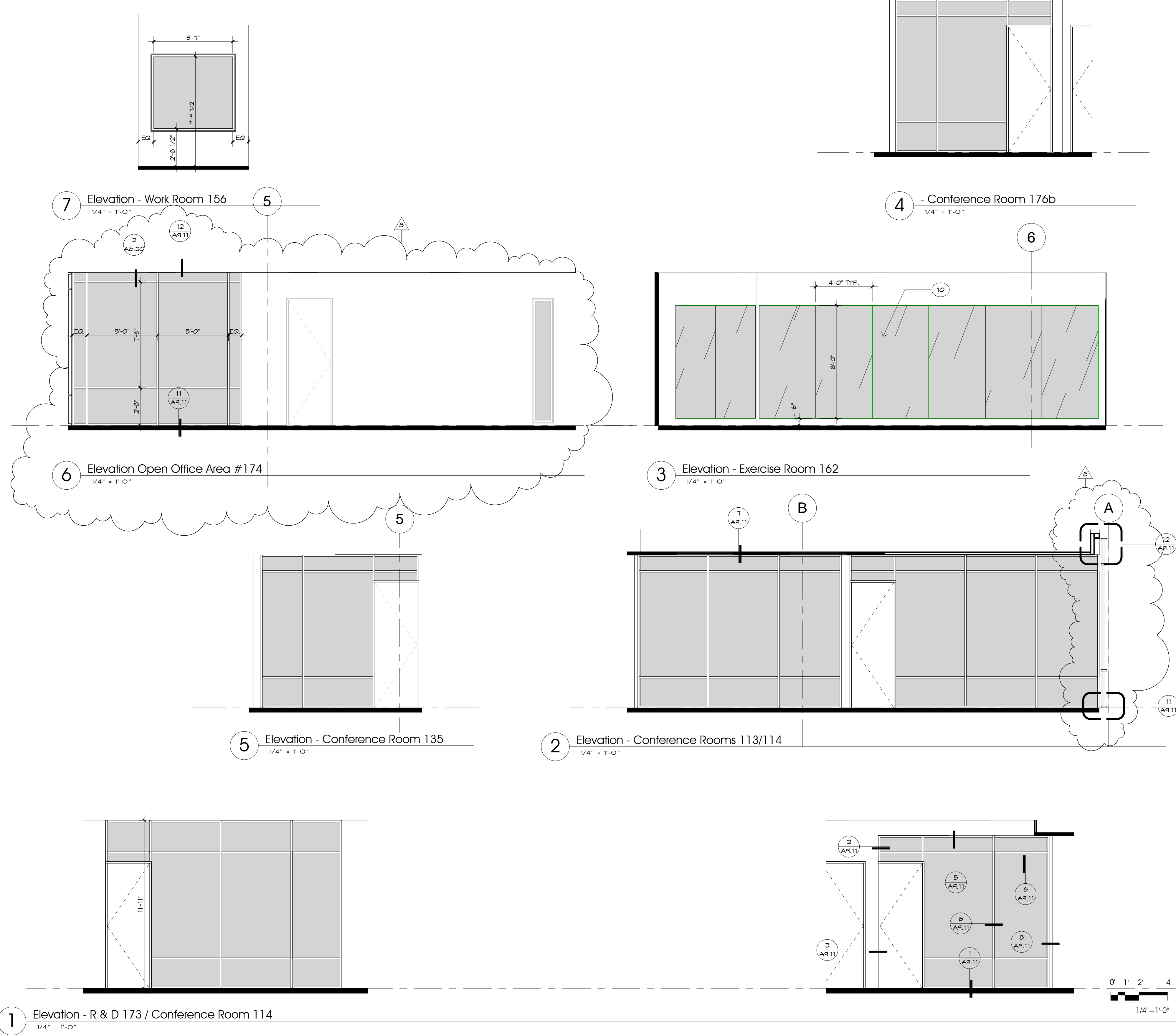
ENLARGED
PLANS/VIEWS



Corporate HQ
Relocation

30 Rio Robles Drive, San Jose, CA

Issue	Description	Date
5	Progress	11/2/11
6	Permit Application	11/9/11
8	Bulletin 1	11/16/11

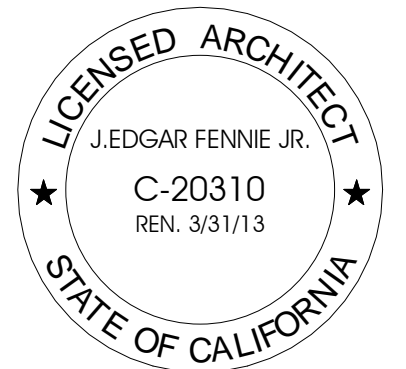


KEYNOTES

(KEY NOTES FOR THIS SHEET ONLY)
10 1/4" THK TEMPERED GLASS MIRRORS ATTACHED TO PARTITION WITH MINIMAL CLIPS/FRAMES.

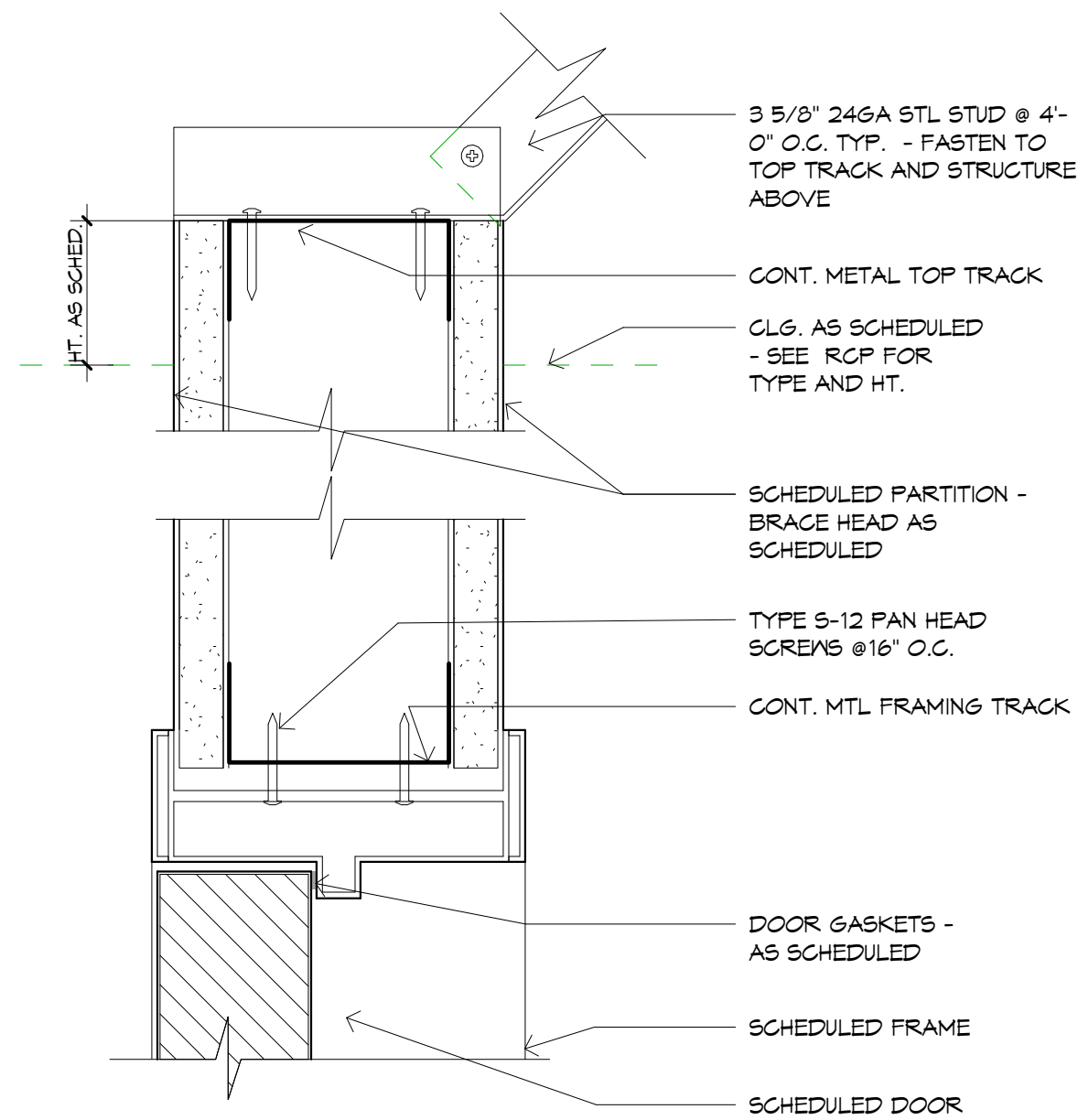
LEGEND

Project Number: 91195.00
 Drawn By: JEF
 Checked By: Checker
 Date: 10/4/11
 Owner Approval: Janice Passarelio
 Date:

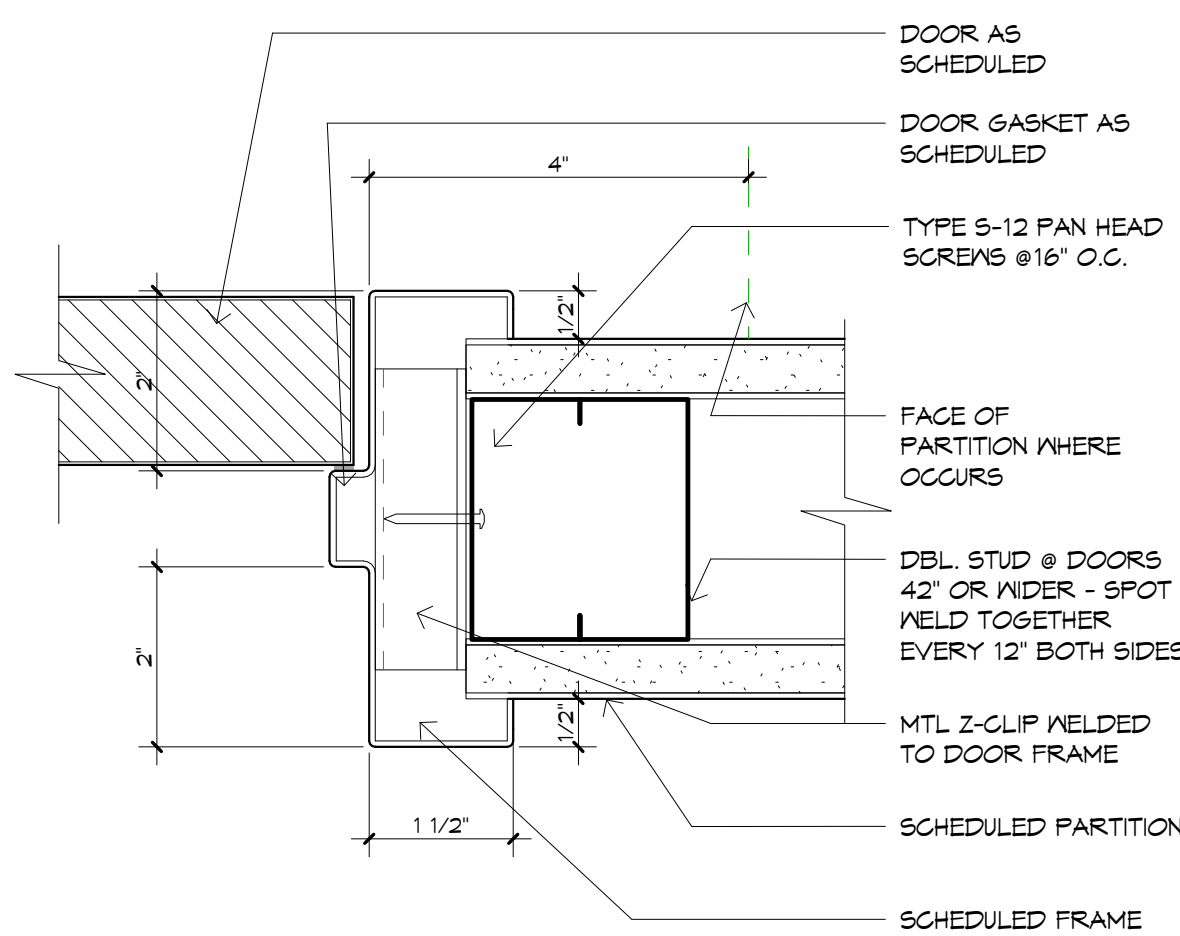


ELEVATIONS

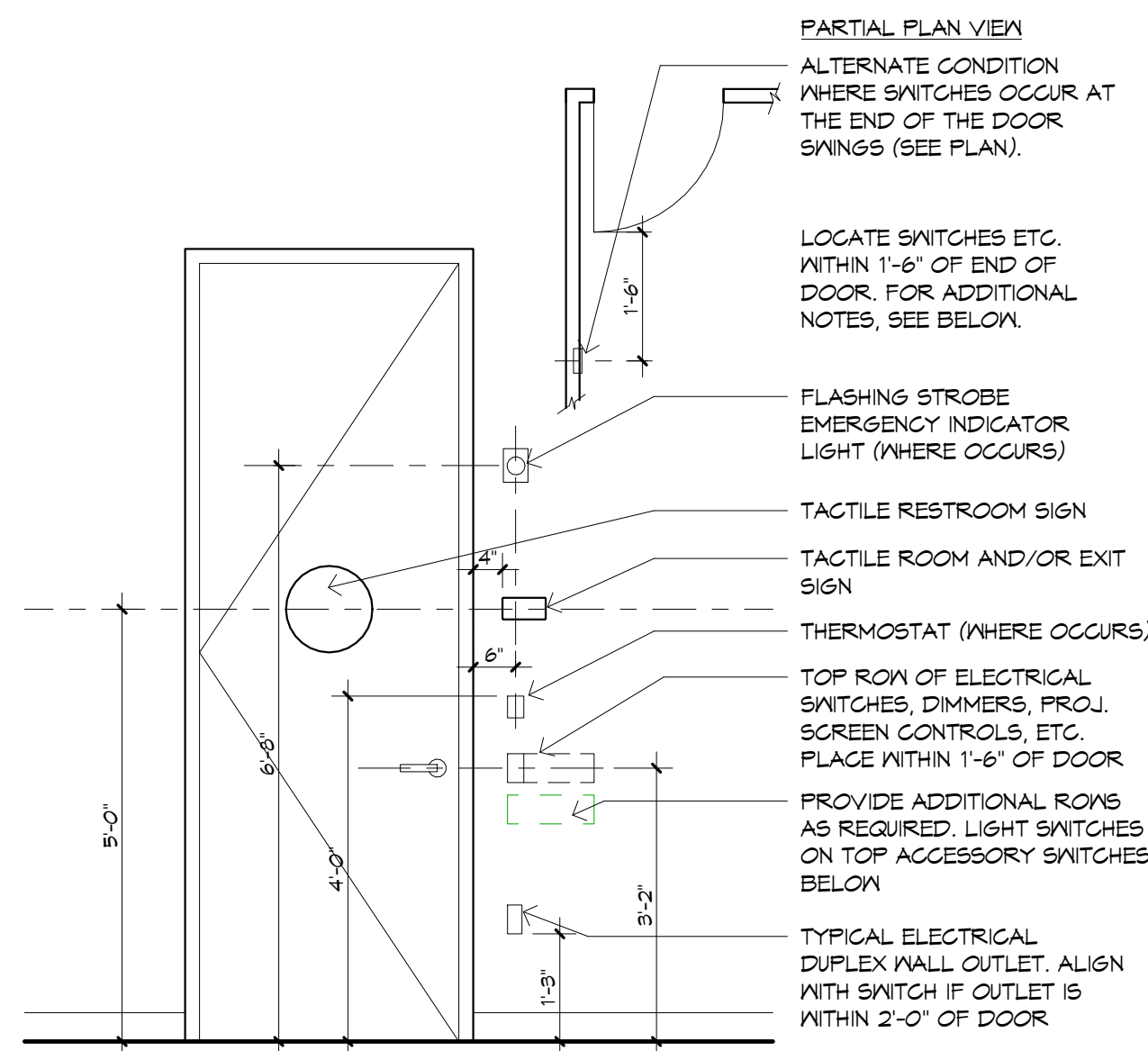
Issue	Description	Date
5	Progress	11/2/11
6	Permit Application	11/9/11
8	Bulletin 1	11/16/11



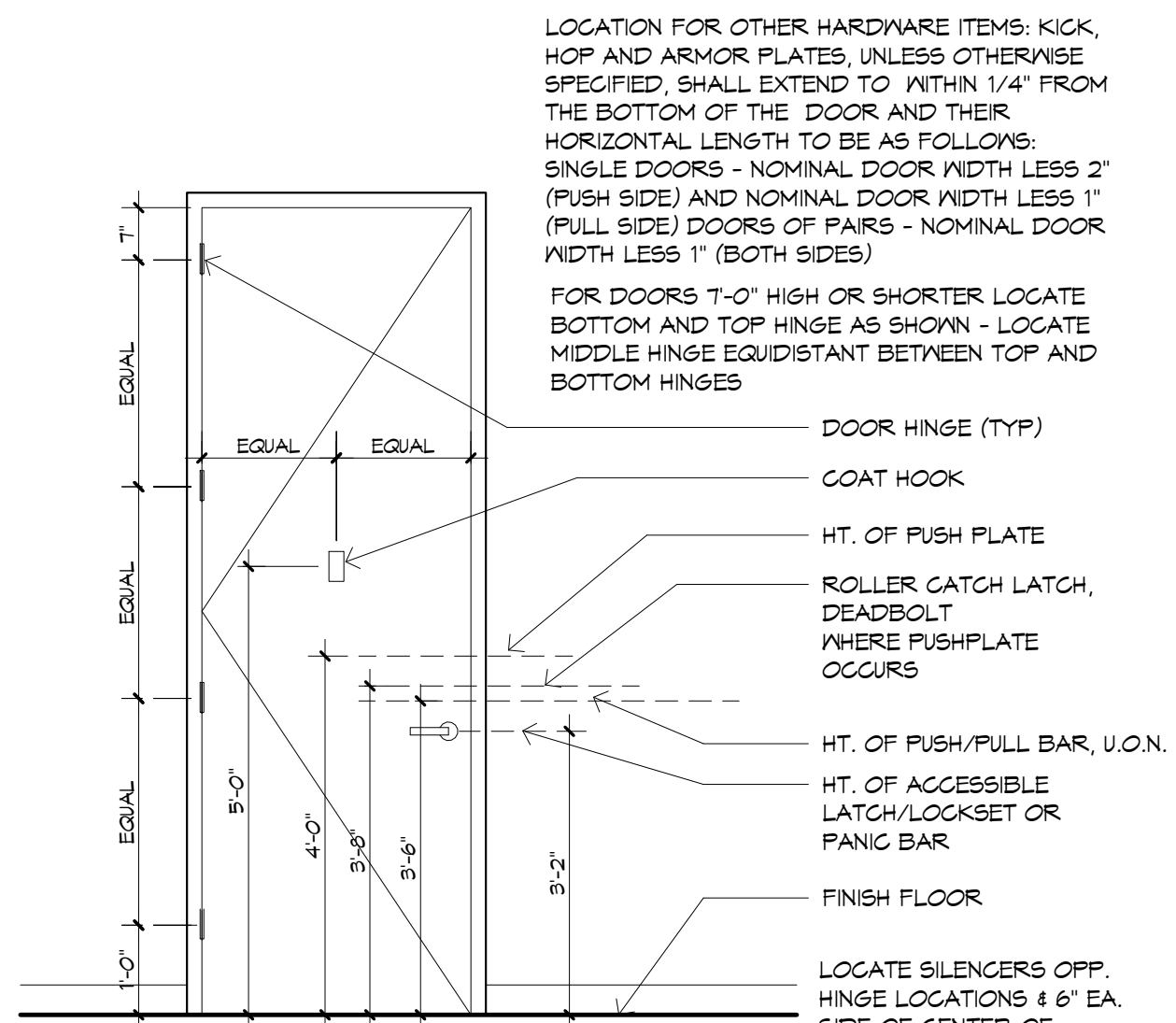
16 ALUM. FRAME DOOR HEAD
6\"/>



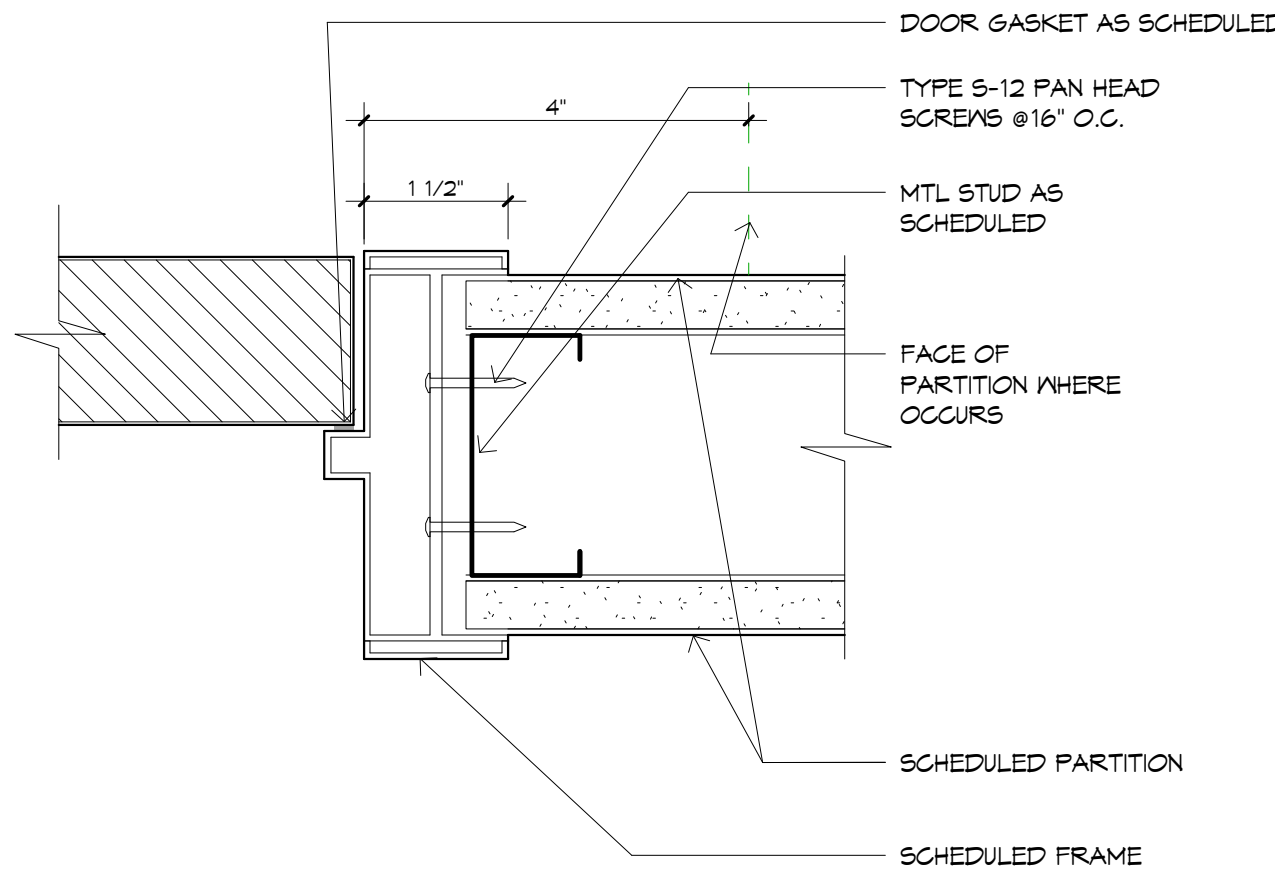
12 HOLLOW METAL DOOR JAMB
6\"/>



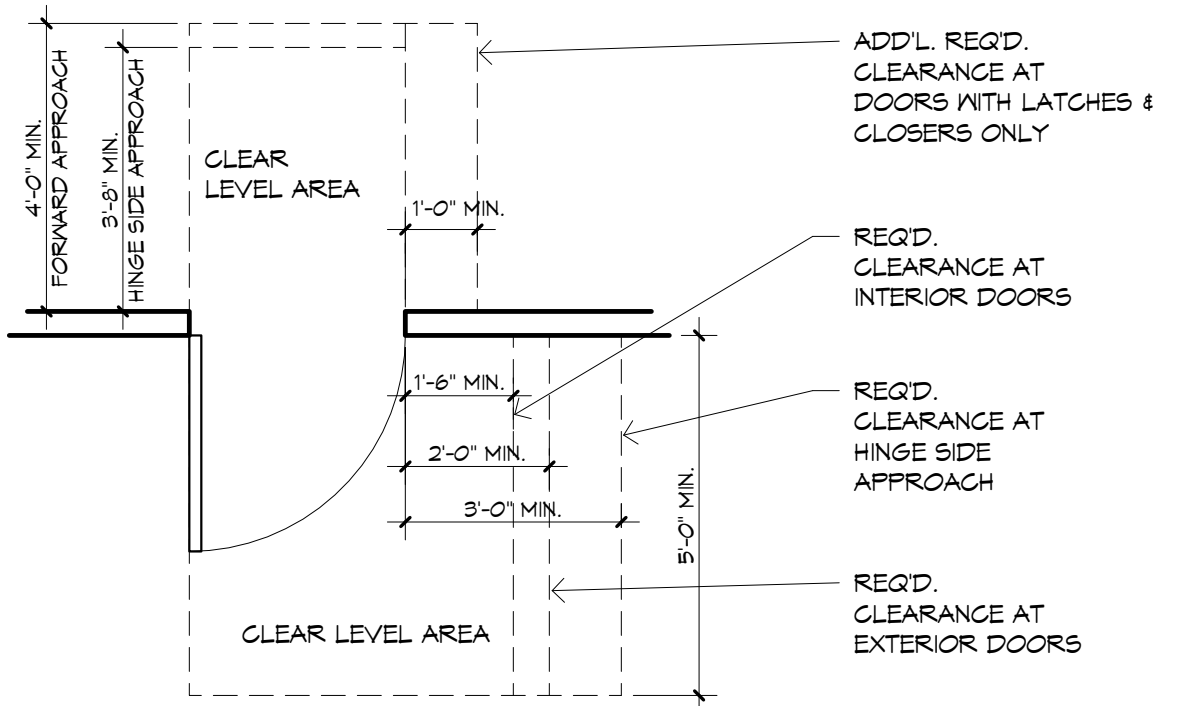
19 TYP. DEVICE/SIGN LOCATIONS
12\"/>



15 DOOR HARDWARE MOUNTING LOCATIONS
12\"/>



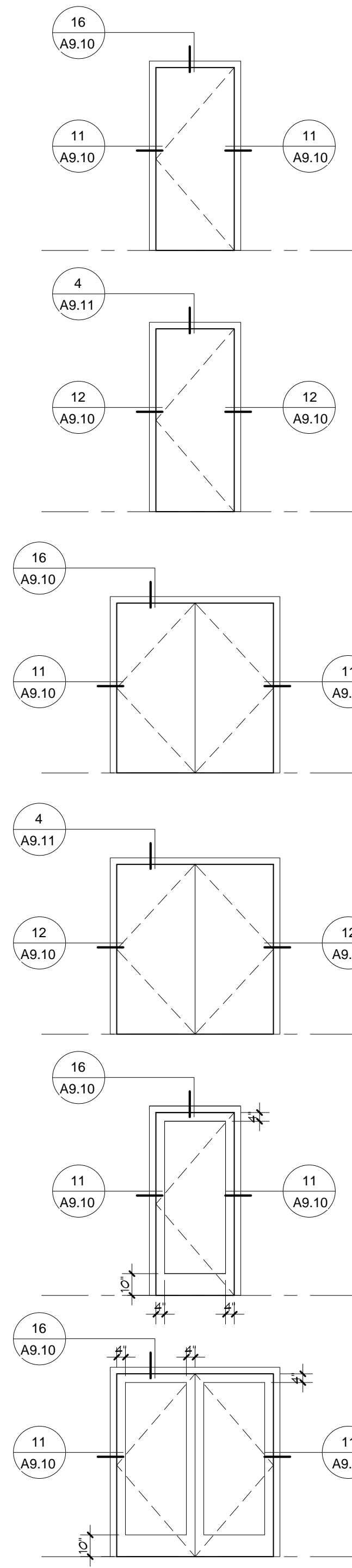
11 ALUM. DOOR JAMB
6\"/>



7 TYP. ACCESSIBLE DOOR CLEARANCES
3/8\"/>

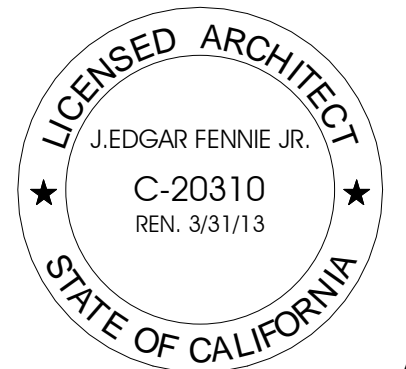
HARDWARE SCHEDULE

Group	Function	Rating	Hinges	Latch/Lock	Stop	Auto Flush Bolts	Flush Bolts	Flr. Strike	Closer	Coord.	Mntg. Bracket	Astragal	Smoke Seal	Threshold	Door Shoe	Pull	Latch	Comments
2	Tenant Entry - Double	NR	4 Pair Hager BB127H 4.5x4.5	Schiage L449SP 1TA	(2) Ives F5436	Ives FB41P	-	Ives DP2	(2) LCN 4041	Ives COR52 x FL20	Ives MB2 (alum. frame)	-	-	-	-	-	-	-
3	Office Passage - Single	NR	2 Pair Hager BB127H 4.5x4.5	Schiage L4010 1TA	(1) Ives F5436	-	-	-	-	-	-	-	-	-	-	-	-	-
5A	Office Passage - Single	20 Min.	2 Pair Hager BB127H 4.5x4.5	Schiage L4010 1TA	(1) Ives F5436	-	-	-	(1) LCN 4041DEL	-	-	-	Pemko 500 (HM Frame) H52000 (alum. frame)	-	-	-	-	-
4	Office Lock - Single	NR	2 Pair Hager BB127H 4.5x4.5	Schiage L4020P 1TA	(1) Ives F5436	-	-	-	-	-	-	-	Pemko 500 (HM Frame) H52000 (alum. frame)	-	-	-	-	-
4A	Office Lock - Single	20 Min.	2 Pair Hager BB127H 4.5x4.5	Schiage L4020P 1TA	(1) Ives F5436	-	-	-	(1) LCN 4041	-	-	-	Pemko 500 (HM Frame) H52000 (alum. frame)	-	-	-	-	-
5	Passage - Double	NR	4 Pair Hager BB127H 4.5x4.5	Schiage L4010 1TA	(2) Ives F5436	Ives FB41P	-	Ives DP2	(2) LCN 4041	Ives COR52 x FL20	-	-	-	-	-	-	-	-
5A	Passage - Double	20 Min.	4 Pair Hager BB127H 4.5x4.5	Schiage L4010 1TA	(2) Ives F5436	Ives FB41P	-	Ives DP2	(2) LCN 4041	Ives COR52 x FL20	-	-	Pemko 395CV (active side)	Pemko 500 (HM Frame) H52000 (alum. frame)	-	-	-	-
7B	Storage/Utility/Janitor - Single	45-60 Min.	2 Pair Hager BB127H 4.5x4.5	Schiage L4020P 1TA	(1) Ives F5436	-	-	-	(1) LCN 4041	-	-	-	Pemko 500 (HM Frame)	Pemko 210	Pemko 234	-	-	-
11A	Office Lock - Double	NR	4 Pair Hager BB127H 4.5x4.5	Schiage L4020P 1TA	(2) Ives F5436	Ives FB41P	-	Ives DP2	(2) LCN 4041	Ives COR52 x FL20	-	-	-	-	-	-	-	-
23	Card Reader - Double	NR	(7) Hager BB127H 4.5x4.5, (1) Hager ETV4DB127H 4.5x4.5	Schiage L4020P	(2) Ives F5436	Ives FB41P	-	Ives DP2	(1) LCN 4041	Ives COR52 x FL20	Ives MB2 (alum. frame)	-	-	-	-	-	-	-



- A**
Door Type: A
Door Size: 3'-0" x 8'-10 1/2"
Door Mat: Solid Core Wood
Door Finish: Wood Veneer Cir. Finish
Frame Mat: Alum.
Frame Finish: Clr. Anodized
Glazing: N/A
Assembly Rating: Nonrated
Note: 1
2
Door Type: AA Same as Door Type: A
Except: Assembly is 20 min. rated
- B**
Door Type: B
Door Size: 3'-0" x 8'-10 1/2"
Door Mat: Hollow Metal
Door Finish: Paint
Frame Mat: Hollow Metal
Frame Finish: Paint
Glazing: N/A
Assembly Rating: 45 Min.
Note:
Door Type: BB Same as Door Type: B
Except: 60 Min. Rated
- C**
Door Type: C
Door Size: 6'-0" x 8'-10 1/2"
Door Mat: Solid Core Wood
Door Finish: Wood Veneer Cir. Finish
Frame Mat: Aluminum
Frame Finish: Clr. Anodized
Glazing: N/A
Assembly Rating: Nonrated
Note:
Door Type: CC Same as Door Type: C
Except: 45 Min. Rated Assembly
- D**
Door Type: D
Door Size: 6'-0" x 8'-10 1/2"
Door Mat: Hollow Metal
Door Finish: Paint
Frame Mat: Hollow Metal
Frame Finish: Paint
Glazing: N/A
Assembly Rating: 45 Min.
Note:
Door Type: DD Same as Door Type: D
Except: 60 Min. Rated
- E**
Door Type: E
Door Size: 3'-0" x 8'-10 1/2"
Door Mat: Clear Anodized Aluminum
Door Finish: Clear Anodized Aluminum
Frame Mat: Alum.
Frame Finish: Clr. Anodized
Glazing: 1/4" THK. CLEAR TEMPERED
Assembly Rating: Nonrated
Note:
Door Type: EE Same as Door Type: E
Except:
- F**
Door Type: F
Door Size: 6'-0" x 8'-10 1/2"
Door Mat: Clear Anodized Aluminum
Door Finish: Clear Anodized Aluminum
Frame Mat: Alum.
Frame Finish: Clr. Anodized
Glazing: 1/4" THK. CLEAR TEMPERED
Assembly Rating: Nonrated
Note:
Door Type: FF Same as Door Type: F
Except:

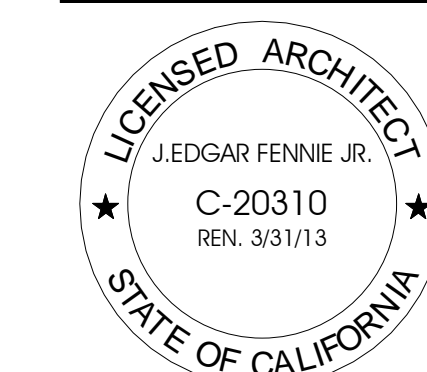
Project Number: 91195.00
Drawn By: JEF
Checked By:
Date: 10/4/11
Owner Approval: Janice Passarelo
Date:



**DOOR TYPES,
HARDWARE
SCHEDULE, +
DOOR DETAILS**

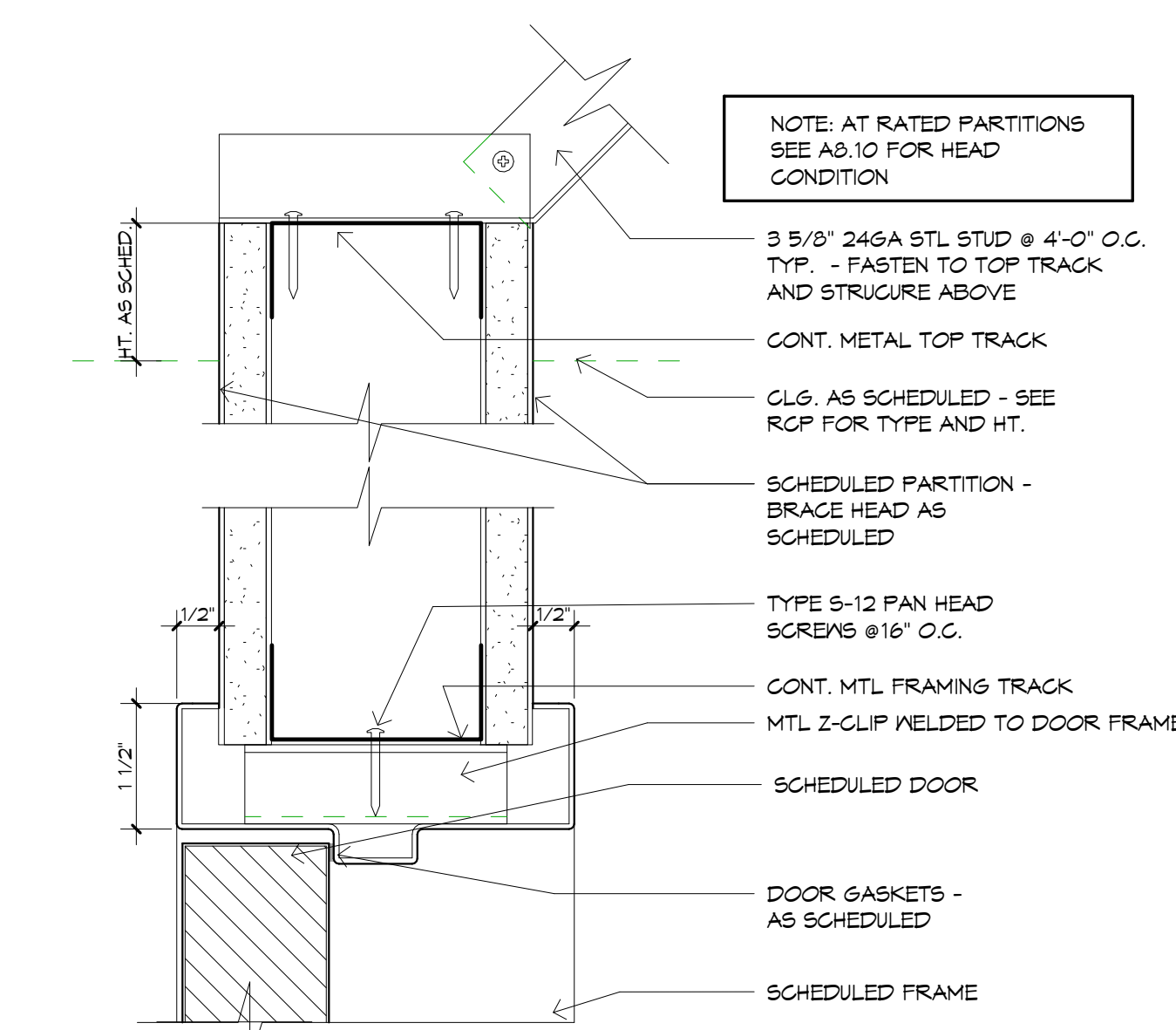
Issue	Description	Date
5	Progress	11/2/11
6	Permit Application	11/9/11
8	Bulletin 1	11/16/11

Project Number:	91195.00
Drawn By:	JEF
Checked By:	Checker
Date:	10/4/11
Owner Approval:	Janice Passarelio
Date:	

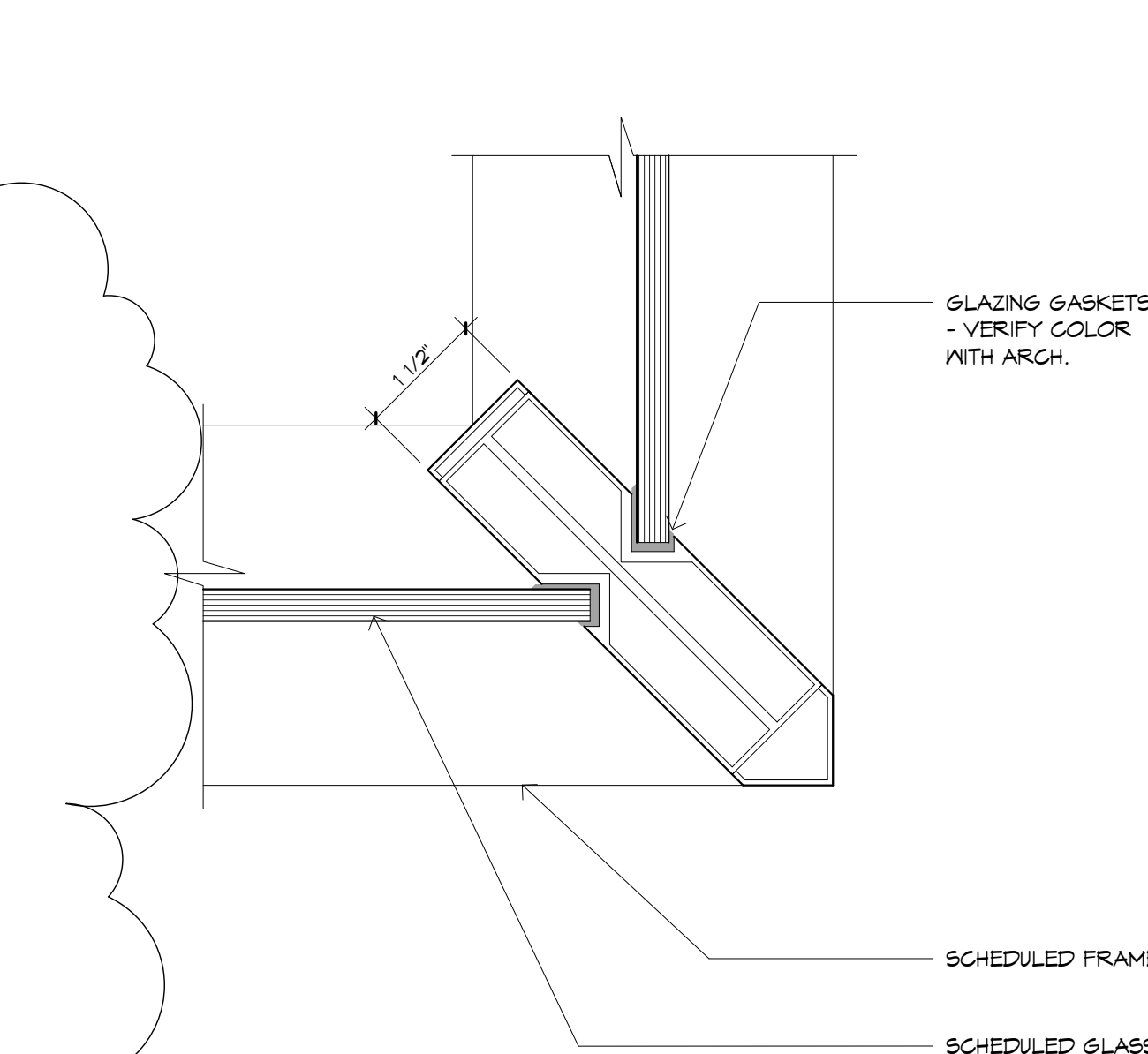


6" = 1'-0"

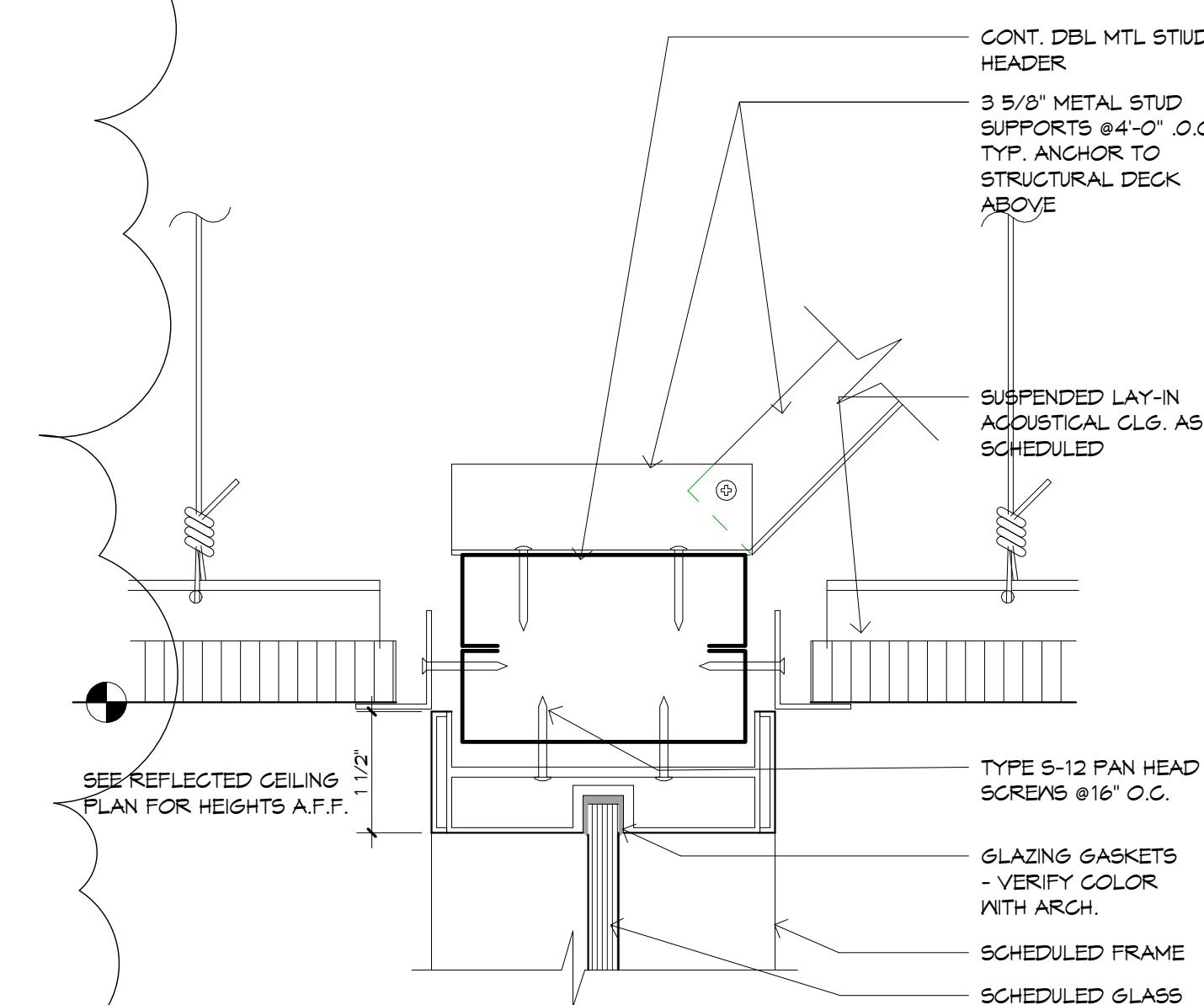
DOOR + GLAZING
DETAILS



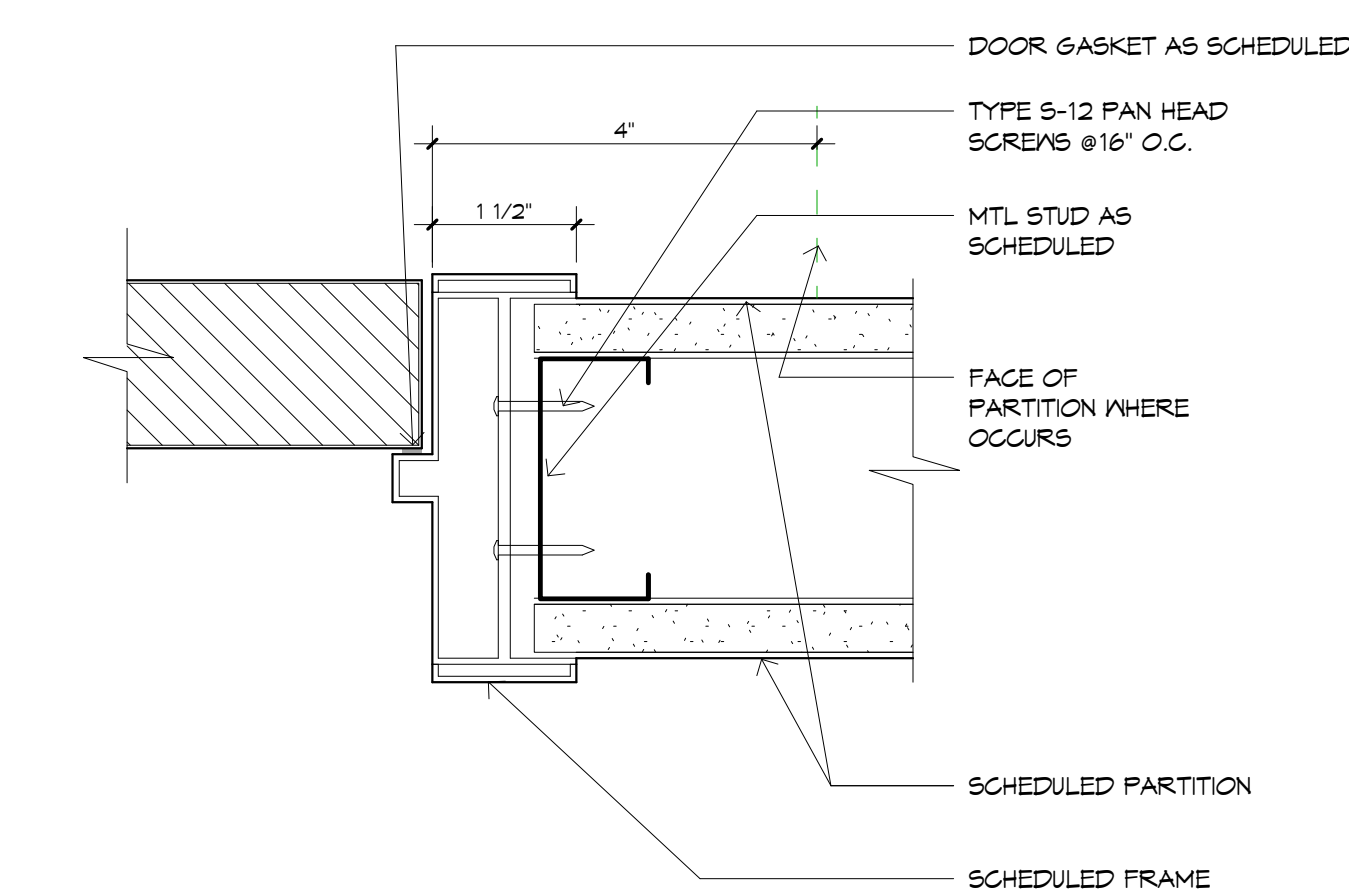
4 HOLLOW METAL DOOR HEAD
6" = 1'-0"



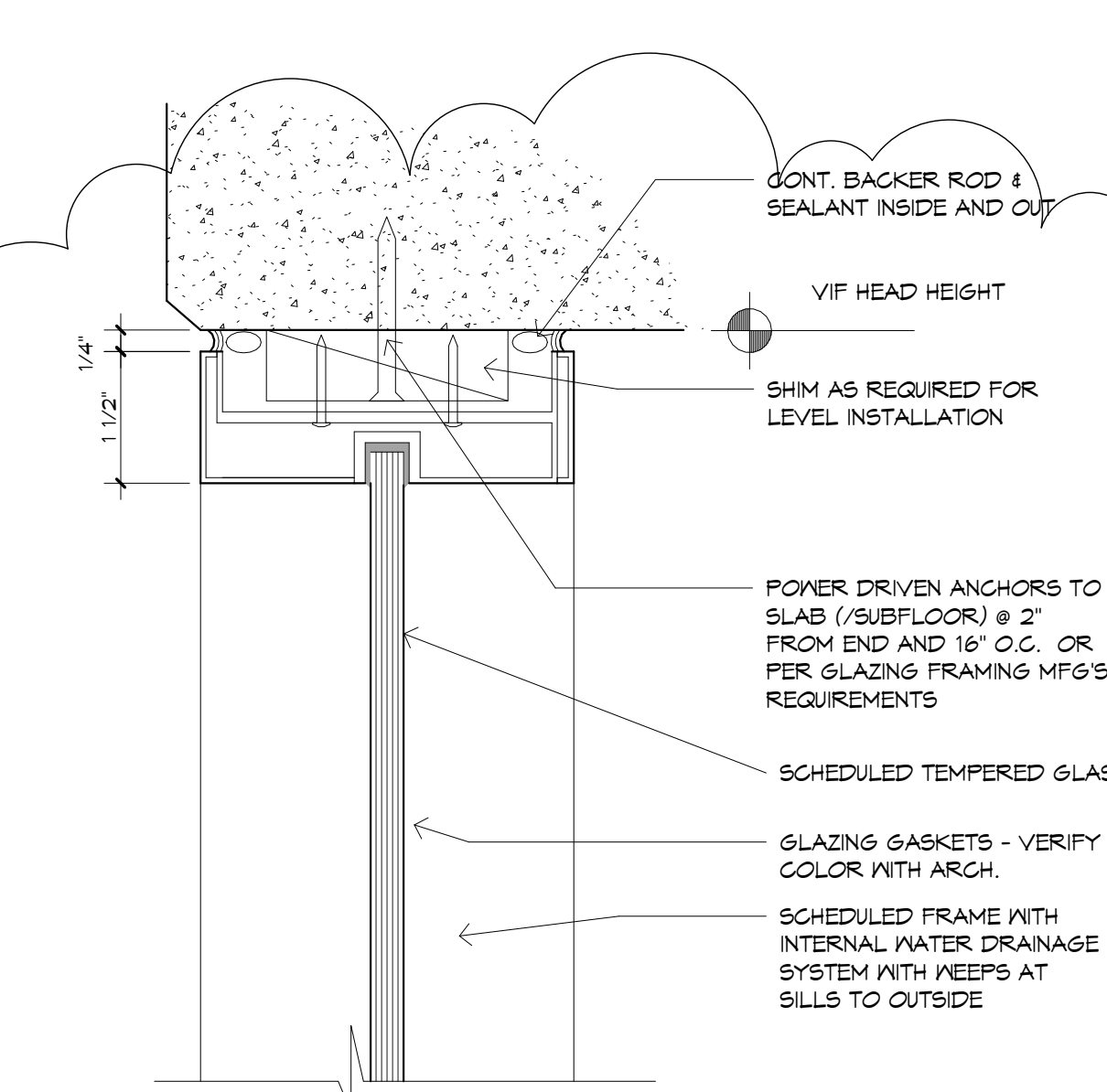
8 ALUM. FRAME GLAZING CORNER
6" = 1'-0"



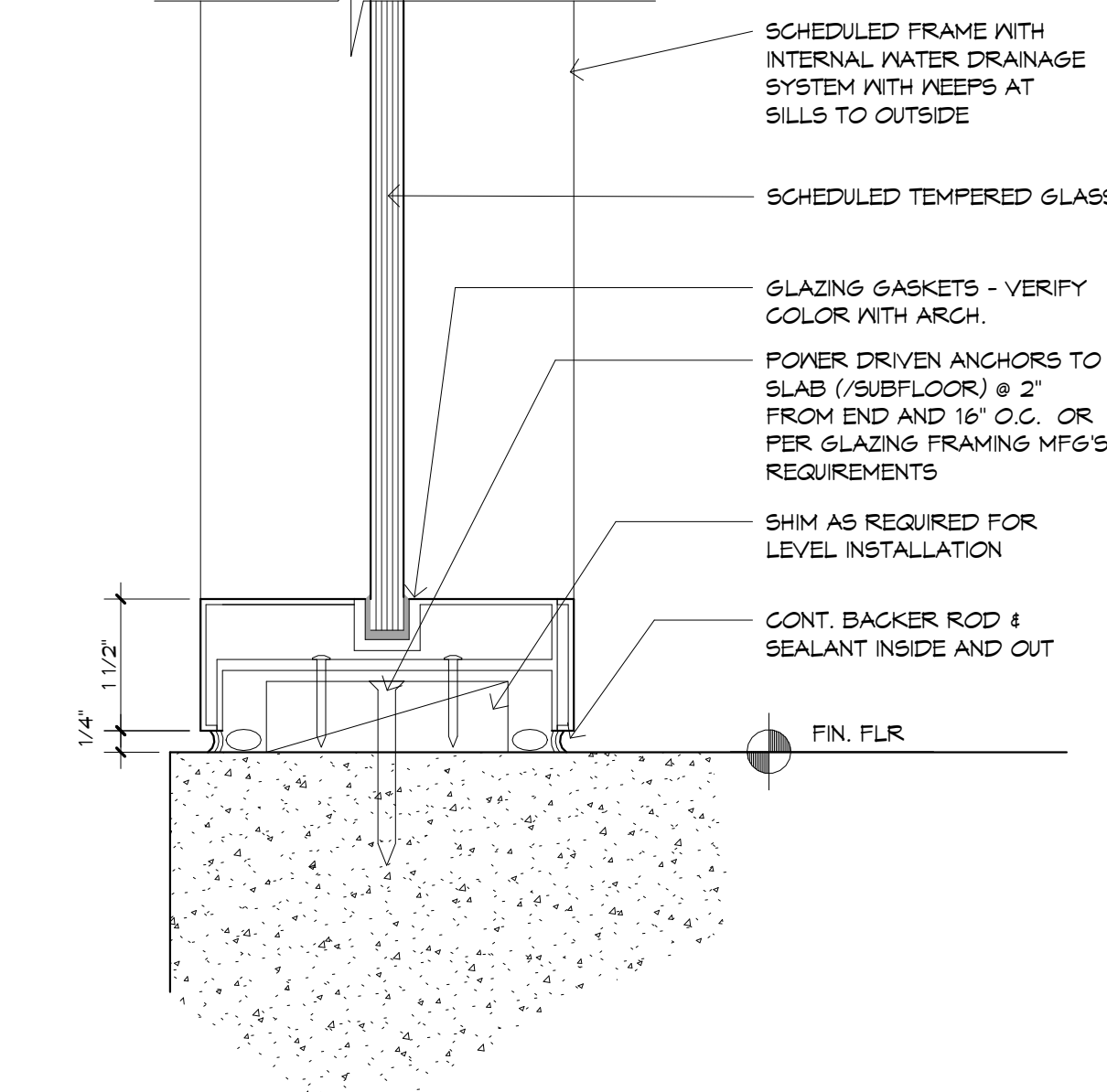
7 ALUM. FRAME GLAZING HEAD @ CLG.
6" = 1'-0"



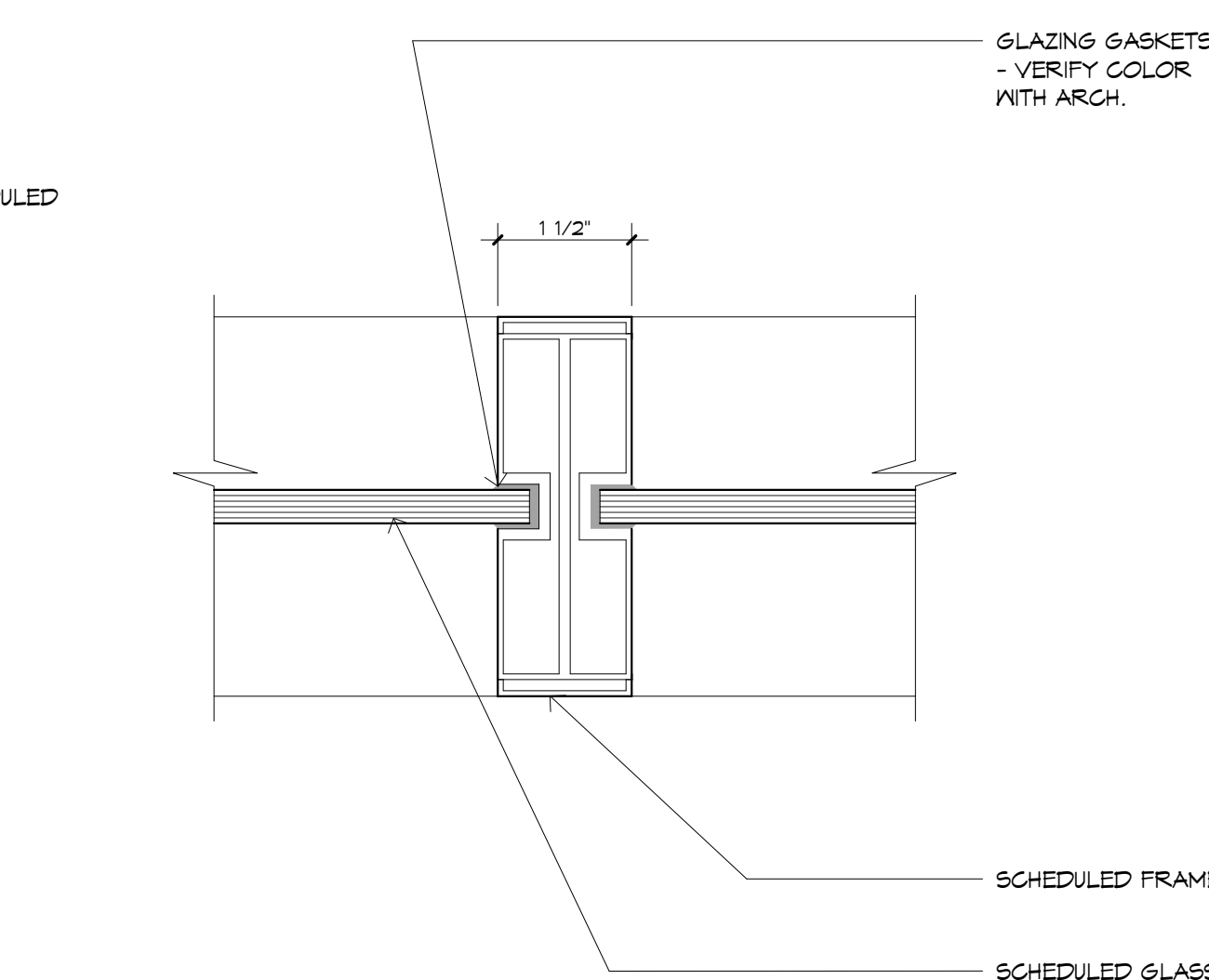
3 ALUM. FRAME DOOR JAMB
6" = 1'-0"



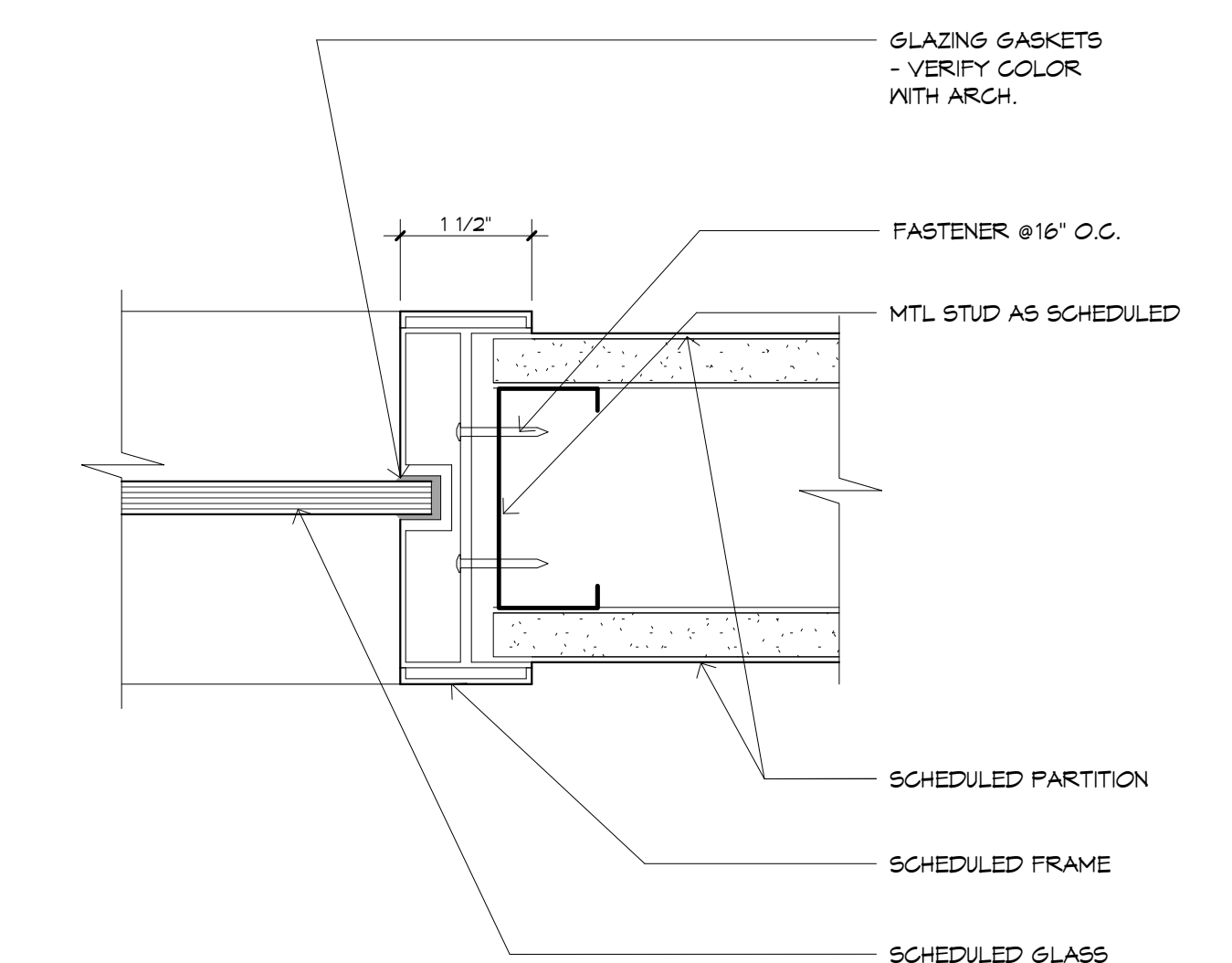
12 ALUM. FRAME GLAZING HEAD @ EXTERIOR WALL
6" = 1'-0"



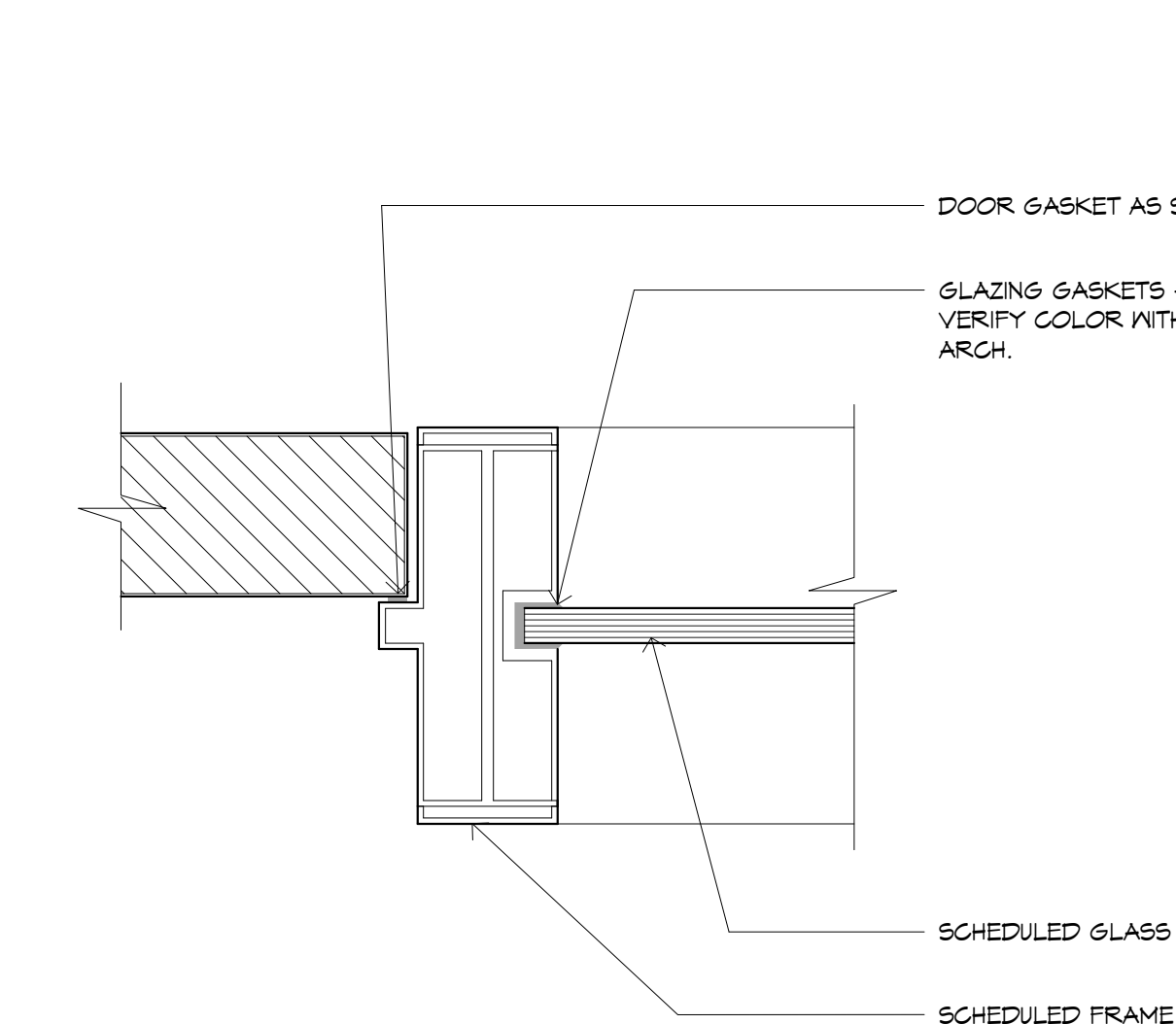
11 ALUM. FRAME GLAZING SILL @ EXTERIOR WALL
6" = 1'-0"



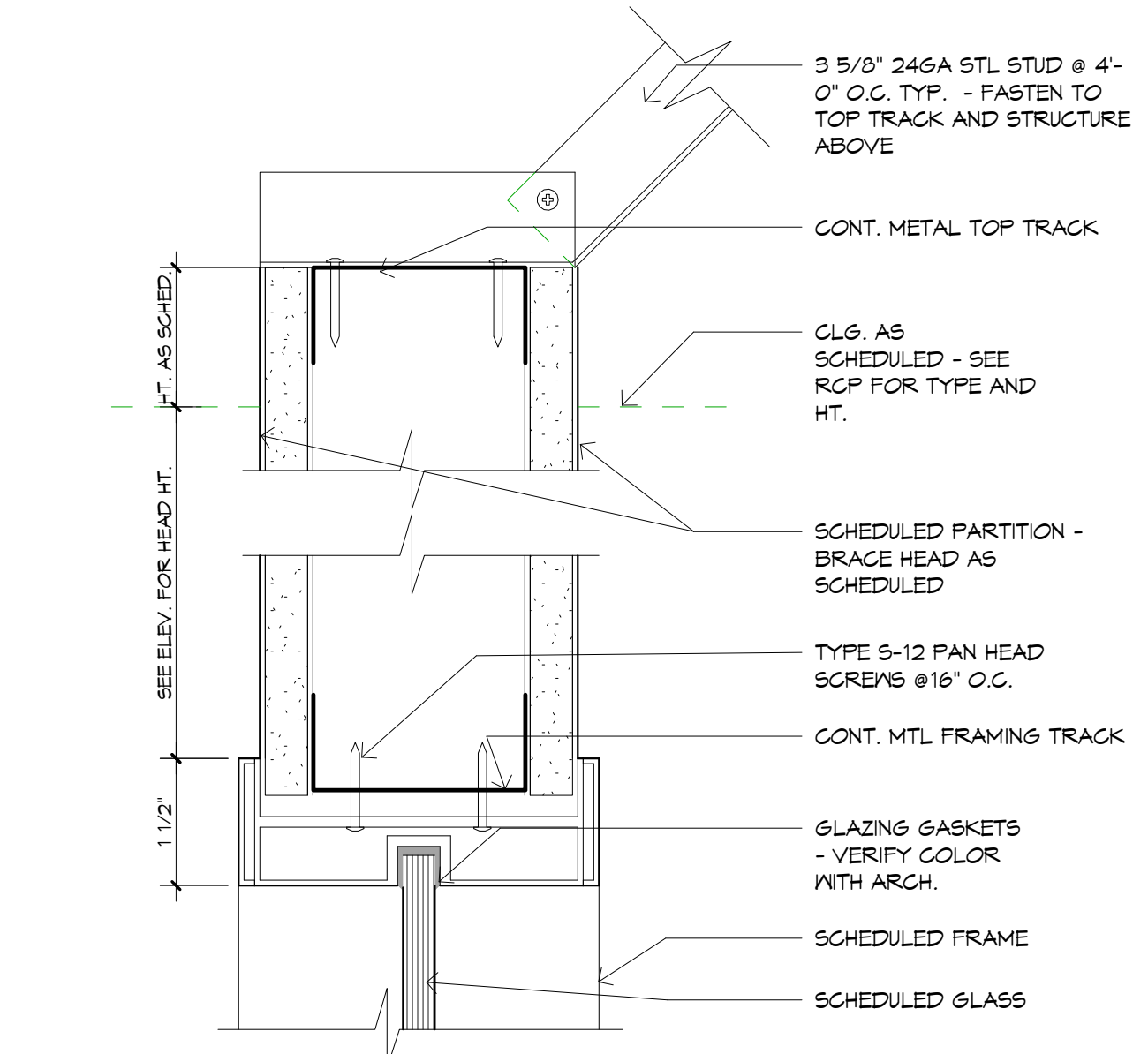
6 ALUM. FRAME GLAZING MULLION
6" = 1'-0"



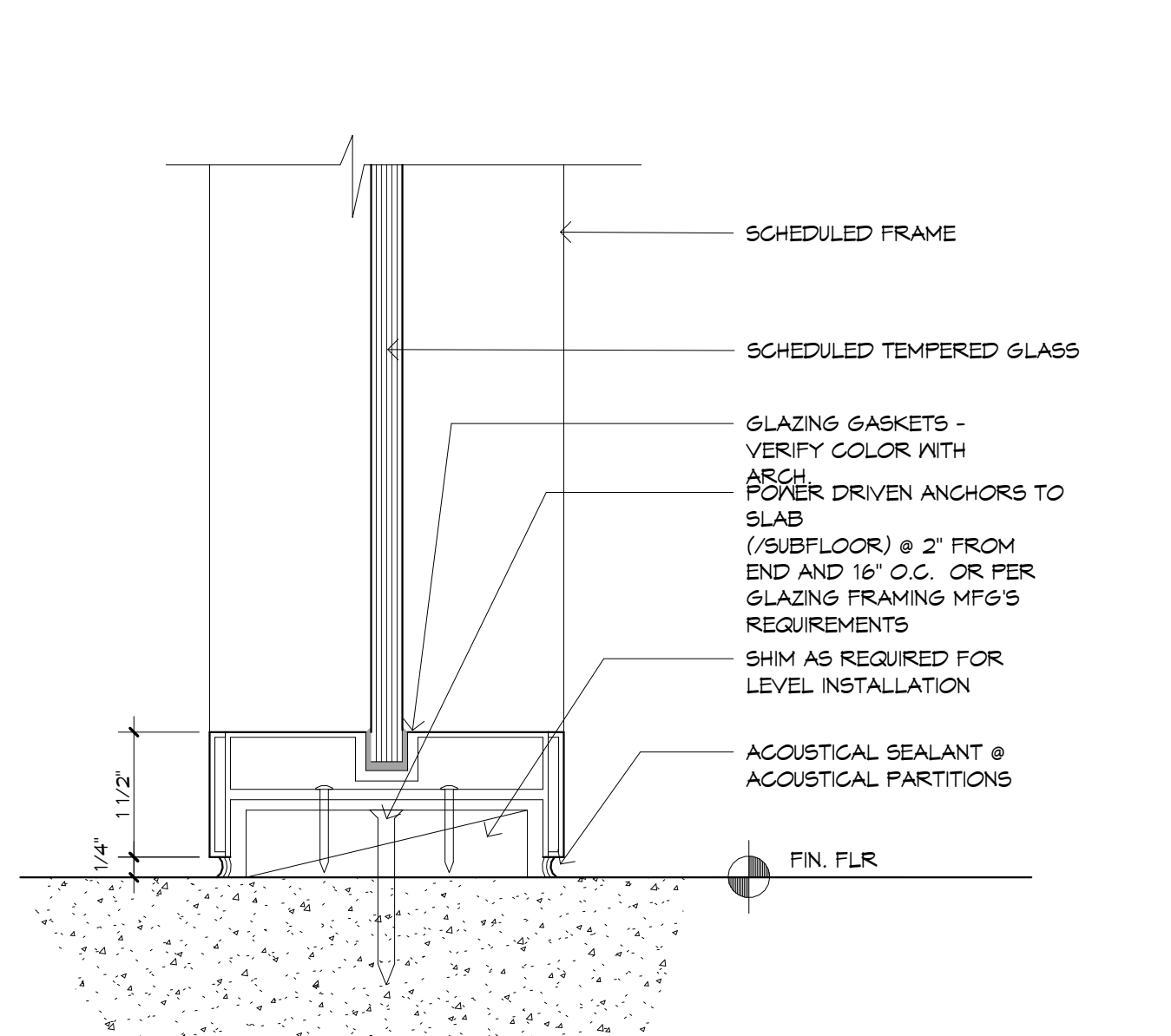
2 ALUM. FRAME GLAZING JAMB - TYP.
6" = 1'-0"



10 ALUM. FRAME GLAZING/DOOR JAMB
6" = 1'-0"



5 ALUM. FRAME GLAZING HEAD
6" = 1'-0"



1 ALUM. FRAME GLAZING SILL
6" = 1'-0"